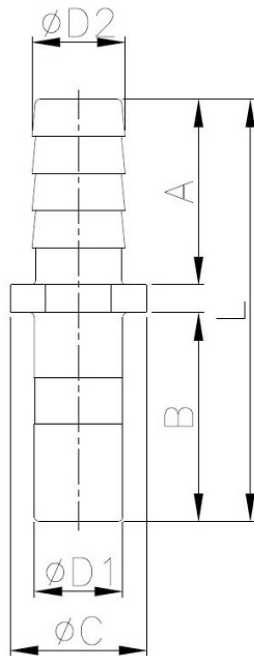


# Tube Barb Connector

Pressure Ratings			
	< 5/16"	3/8"	1/2"
33 °F	290 psi	232 psi	203 psi
68 °F	290 psi	232 psi	203 psi
150 °F	232 psi	203 psi	116 psi



Model	$\phi D1$	$\phi D2$	$\phi C$	L	A	B	WEIGHT(g)
ATBC64M	6	4.5	11.4	38.2	18	17.2	1
ATBC66M	6	6.5	11.4	38.2	18	17.2	1.1
ATBC86M	8	6.5	12.2	40	18	19	1.7
ATBC106M	10	6.5	14.7	43.5	18	22.5	2.3
ATBC108M	10	8.6	14.7	43.5	18	22.5	2.7
ATBC1010M	10	10.5	14.7	45.5	20	22.5	2.9
ATBC1210M	12	10.5	18.5	50.5	20	27.5	3.2