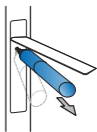




## Installation Quick Start Guide for WSG-4

### Important Installation Instructions

- 1** Open filter compartment door and remove the old filter by lifting it upward until it can no longer move. Gently pull the old filter straight out of the cartridge holder (Do Not Twist Cartridge.) A small amount of water may drip down.

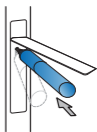


- 2** Remove protective cap from new replacement filter.



- 3** Insert top of filter into the cartridge holder, and push until filter is fully seated into position.

- 4** Gently swing the filter cartridge downward back into a vertical position. If the filter does not move downward easily, check the alignment of the top of the filter with the cartridge holder and ensure that it is fully seated.



- 5** Run water from the dispenser for 5 minutes (about 2 ½ gallons) to clear the system and prevent sputtering. See "To Use the Dispenser" section in refrigerator User Manual for more information.

*Note: A newly-installed water filter cartridge may cause water to spurt from the dispenser.*



- 6** Locate the included Water Filter Replacement Calendar, and place dark circle over the month you installed your new filter. The light circle will indicate your next replacement month (May vary with water conditions and usage).

- 7** To reset Filter Indicator light on the door of the refrigerator, please refer to your refrigerator's User Manual.

**For further questions or assistance please call (866) 218-8473.**

**Warning:** To reduce the risk of property damage from water leakage, the filter bypass plug **MUST** be used when a filter replacement cartridge is not installed.

Do not use where water is microbiologically unsafe or of unknown quality.

Protect from freezing.

REPLACE FILTER EVERY 3-6 MONTHS, OR IF BAD TASTE OR ODOR OCCUR

The risk associated with small parts can cause choking if swallowed.

Keep children away from small parts during the replacement of the water filter.