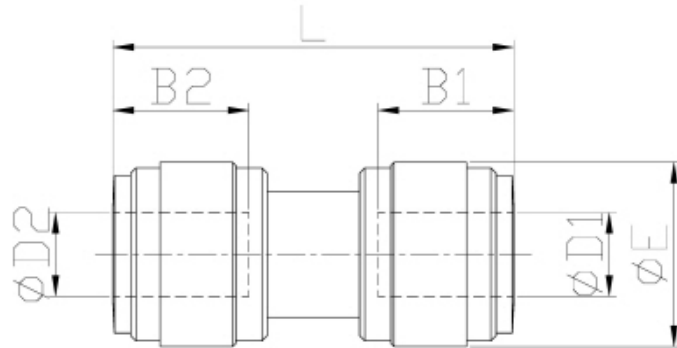


# Union Connector



Pressure Ratings			
	< 5/16"	3/8"	1/2"
<b>33 °F</b>	290 psi	232 psi	203 psi
<b>68 °F</b>	290 psi	232 psi	203 psi
<b>150 °F</b>	232 psi	203 psi	116 psi

Model	ØD1	ØD2	B1	B2	ØE1	ØE2	L	WEIGHT(g)
AUC44M	04	04	14.7	14.7	13.2	13.2	31.8	3.8
AUC64M	06	04	16.1	14.7	15	15	35	5
AUC65M	06	05	16.1	14.9	15	15	35.1	4.9
AUC66M	06	06	16.1	16.1	15	15	35.2	4.7
AUC84M	08	04	17.5	14.7	17.6	17.6	36.6	6.5
AUC86M	08	06	17.5	16.1	17.6	17.6	37.8	7.1
AUC88M	08	08	17.5	17.5	17.6	17.6	38.2	6.9
AUC106M	10	06	20.1	16.1	20	15.5	42	9.8
AUC108M	10	08	20.1	17.5	20	20	42.4	9.6
AUC1010M	10	10	20.1	20.1	20	20	42.7	9.2
AUC128M	12	08	24.7	17.5	23.6	17.6	44.4	11.5
AUC1210M	12	10	24.7	20.1	23	23	51.7	15
AUC1212M	12	12	24.7	24.7	23	23	52.4	14.4