

Request a Quote Today!

Multi-Cartridge Filter Housings

4 and 5 Round Series

neo•PURE™

*Residential/Commercial/Industrial
Filtration Applications*

Standard Features

- Manufactured in the USA
- Holds four or five cartridges from 10" to 40" lengths for optimal choice of flow rates
- Heavy-duty 304L or 316L stainless steel construction for maximum durability and corrosion resistance
- V-band clamp or swing bolt closures for quick and easy cartridge change-outs and secure sealing
- Universal seal cups and compression plates accept DOE and 222/FLAT or FIN cartridges – standard on all filter housings
- 1/4" gauge port on body – standard on all filter housings
- FNPT inlet and outlet connections – standard on 4, 5 and 7 round

Product Specifications

Maximum Operating Pressure

150 psig (10.3 bar) @ 300° F (149° C) - Standard

250 psig (17.2 bar) @ 300° F (149° C) - Optional

Connections

Inlet/Outlet: Standard – 2" FNPT

Optional: MNPT or BSP fittings; RF flanges,

Sanitary ferrules or grooved fittings

Drain Ports: 1/2" FNPT

Vent Ports: 1/4" FNPT

Materials of Construction

Head/Shell/Connections: 304L or 316L stainless steel

Closure: Clamp – 304L stainless steel

Swing bolts – zinc plated steel

Vent and Drain Plugs: 304L or 316L stainless steel

Gaskets

Standard: Buna N (FDA grade)

Optional: EPR, silicone, Teflon encapsulated silicone, Viton

Finish

Poly-coat on exterior surfaces

Optional: 3M™ coating, electropolish, glass bead or passivate

Cartridge Type

DOE style cartridges (maximum 2-3/4" OD) OR

222/FLAT or FIN cartridges – standard on all filter housings

Custom Options

Available in ASME "U" Code specifications, or built to ASME code with no stamp, for commercial and industrial filtration



Applications

- Chemicals
- Cooling Tower Filtration
- Desalination Prefiltration
- Electronics
- Food and Beverage
- Oil / Gas
- Paints / Inks / Coatings
- Paper and Pulp
- Power
- Water



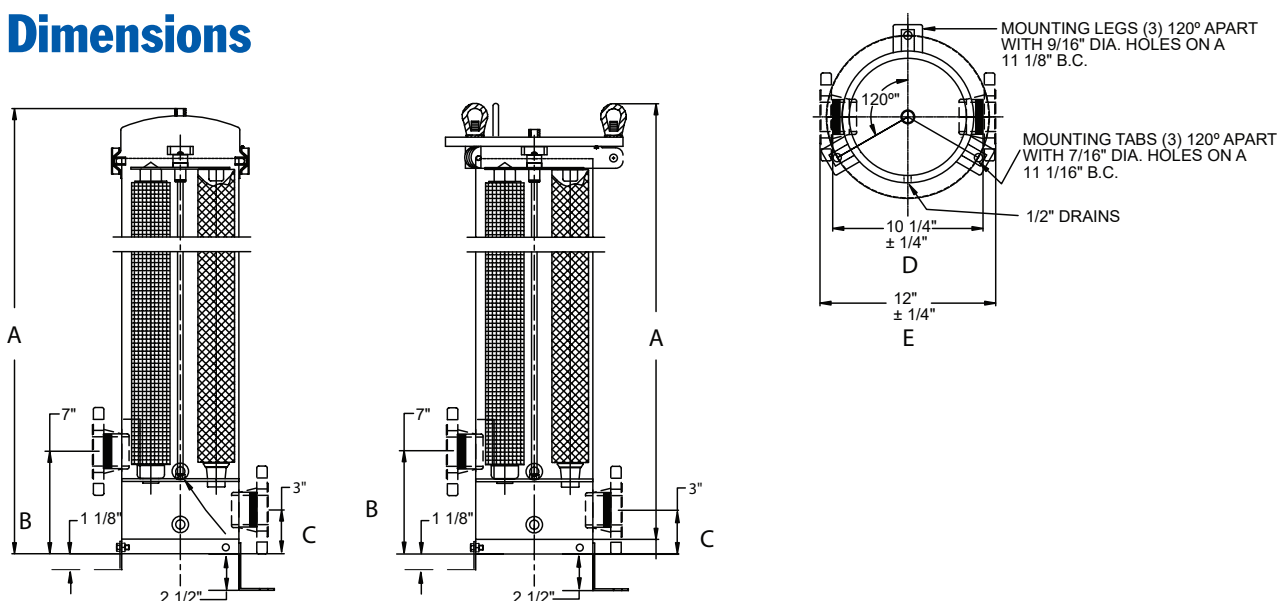
MODEL	QUANTITY (LENGTH) OF CARTRIDGES +	RATED FLOW CAPACITY* GPM (LPM)	MAXIMUM DIAMETER CARTRIDGE	CLAMP STYLE	SWING BOLT STYLE				
				A	A	B	C	D	E
BCM4X1/BCM5X1	4/5 (10")	28 (106) / 35 (132)	2-3/4"	20-7/8" (53.0 cm)	22-1/4" (50.3 cm)	7" (17.8 cm)	3" (7.6 cm)	10-1/4" (26.0 cm)	12" (30.46 cm)
SBM4X1/SBM5X1	4/5 (10")	28 (106) / 35 (132)	2-3/4"	20-7/8" (53.0 cm)	22-1/4" (50.3 cm)	7" (17.8 cm)	3" (7.6 cm)	10-1/4" (26.0 cm)	12" (30.46 cm)
BCM4X2/BCM5X2	4/5 (20")	56 (212) / 70 (285)	2-3/4"	30-7/8" (78.4 cm)	32-1/4" (81.9 cm)	7" (17.8 cm)	3" (7.6 cm)	10-1/4" (26.0 cm)	12" (30.46 cm)
SBM4X2/SBM5X2	4/5 (20")	56 (212) / 70 (285)	2-3/4"	30-7/8" (78.4 cm)	32-1/4" (81.9 cm)	7" (17.8 cm)	3" (7.6 cm)	10-1/4" (26.0 cm)	12" (30.46 cm)
BCM4X3/BCM5X3	4/5 (30")	84 (318) / 105 (397)	2-3/4"	40-7/8" (103.8 cm)	42-1/4" (107.3 cm)	7" (17.8 cm)	3" (7.6 cm)	10-1/4" (26.0 cm)	12" (30.46 cm)
SBM4X3/SBM5X3	4/5 (30")	84 (318) / 105 (397)	2-3/4"	40-7/8" (103.8 cm)	42-1/4" (107.3 cm)	7" (17.8 cm)	3" (7.6 cm)	10-1/4" (26.0 cm)	12" (30.46 cm)
BCM4X4/BCM5X4	4/5 (40")	112 (424) / 140 (530)	2-3/4"	50-7/8" (129.2 cm)	52-1/4" (132.7 cm)	7" (17.8 cm)	3" (7.6 cm)	10-1/4" (26.0 cm)	12" (30.46 cm)
SBM4X4/SBM5X4	4/5 (40")	112 (424) / 140 (530)	2-3/4"	50-7/8" (129.2 cm)	52-1/4" (132.7 cm)	7" (17.8 cm)	3" (7.6 cm)	10-1/4" (26.0 cm)	12" (30.46 cm)

+ Housings will accept cartridge lengths: 10" = (9-3/4" or 10"), 20" = (19-1/2" or 20"), 30" = (29-1/4" or 30") and 40" = (39" or 40")

* Based upon 7 gpm per 10" length with a 25 micron wound cartridge at 2 PSID clean and viscosity of 1 cps. Flow rates are for guidelines only.

Actual flow rates are based on fluid, viscosity, cartridge type, micron ratings and other factors.

Dimensions



Ordering Guide (Example: BCM4X3-316L-226-2FC-PG-E)

BCM4X	3	-	316L	-	226	-	2	FC	-	PG	-	E
MODEL	CARTRIDGE LENGTH		MATERIAL /FINISH		CARTRIDGE CONFIGURATION		INLET/ OUTLET	CONNECTION TYPE		OPTIONS		GASKET
BCM4X = 4 cartridges BCM5X = 5 cartridges (V-Band Clamp Closure)	1 = 10", 9-7/8", 9-3/4" 2 = 20", 19-1/2" 3 = 30", 29-1/4" 4 = 40"		Blank = 304L (Standard) 316L = 316L 304LC = 304L Coated 316LC = 316L Coated 304LEP = 304L Electropolished 316LEP = 316L Electropolished 304LGB = 304L Glass Bead		Blank = DOE (Standard) 226 = 226 Fin/ Flat		2 = 2" (Standard up to 7 round) 3 = 3" 4 = 4" 6 = 6" 8 = 8"	FT = FNPT (Standard) MT = MNPT Male Thread FC = Female Couplings BT = BSP Tapered BP = BSP Parallel FL = Flange TC = Ferrules GF = Grooved Fittings		Blank = Mounting Legs, Gauge Ports (Standard) PG = Pressure Gauges (2) P = Passivate U = ASME Code "U" Stamp NS = Built to ASME Code/no Stamp HP = High Pressure (up to 250psi)		Blank = Buna N (Standard) E = EPR S = Silicone V = Viton T = Teflon Encapsulated Silicone

*ASME Code "U" Stamped housings are only available with Swing Bolt Closures.



Authorized MAHLE-Nowata Distributor & Representative

For pricing and information please call
Commercial Filtration Supply at (855)-236-0467

Visit us Online at: www.commercialfiltrationsupply.com
for more filtration products.