



HSBJ SERIES

Swing Bolt Jumbo Filter Housings
Data Sheet

- 304 or 316 Stainless Steel.
- Electropolished standard on all models.
- Swing Bolt Design for Fast / Easy Operation.
- Stainless Steel Standpipe.
- Accepts Jumbo Style Cartridges.
- Multiple Size options to best meet your application.



HYDROSCIENTIFIC™ HSBJ SERIES SWING BOLT JUMBO FILTER HOUSINGS

provide an exceptional performance that delivers durability, quality and price.

HYDROSCIENTIFIC™ HSBJ SERIES SWING BOLT JUMBO FILTER HOUSINGS

come with Stainless Steel standpipes as a standard feature and through their JUMBO radial flow water entry, water enters the housing and forces water more effectively through the cartridges pleated filter media.

HSBJ SERIES - 304SS SWING BOLT JUMBO FILTER HOUSING SPECIFICATIONS

Part Number	Description	Ports (In/Out)	Drains (FNPT)	Vents (FNPT)	Gauge Port (FNPT)	Swing Arm	Max. Flow (gpm)	Max. Flow (lpm)	Max. Flow (m ³ /hr)
HSBJ40	HydroScientific™ SB 40 Jumbo Filter Housing, ML, EP	2" FNPT	1"	1/4"	-	-	50	189	12
HSBJ90	HydroScientific™ SB 90 Jumbo Filter Housing, ML, EP	2" FNPT	1"	1/4"	-	-	100	378	24
HSBJ170	HydroScientific™ SB 170 Jumbo Filter Housing, ML, EP	2" FNPT	1"	1/4"	-	-	150	568	36
HSBJ170SB-3	HydroScientific™ SB 3 x 170 Jumbo Filter Housing, ML, EP	4" FL	1½"	1/2"	1/2"	-	450	1703	102
HSBJ170SB-4	HydroScientific™ SB 4 x 170 Jumbo Filter Housing, ML, EP	6" FL	1½"	1/2"	1/2"	-	600	2271	144
HSBJ170SB-5	HydroScientific™ SB 5 x 170 Jumbo Filter Housing, ML, EP	6" FL	1½"	1/2"	1/2"	-	750	2839	170
HSBJ170SB-8	HydroScientific™ SB 8 x 170 Jumbo Filter Housing, ML, EP	6" FL	1½"	1/2"	1/2"	-	1200	4542	272
HSBJ170SB-12	HydroScientific™ SB 12 x 170 Jumbo Filter Housing, ML, GB	12" FL	1½"	1/2"	1/2"	✓	1800	6814	432
HSBJ170SB-16	HydroScientific™ SB 16 x 170 Jumbo Filter Housing, ML, GB	12" FL	2"	1/2"	1/2"	✓	2400	9085	576

HSBJ SERIES - 316SS SWING BOLT JUMBO FILTER HOUSING SPECIFICATIONS

Part Number	Description	Ports (In/Out)	Drains (FNPT)	Vents (FNPT)	Gauge Port (FNPT)	Swing Arm	Max. Flow (gpm)	Max. Flow (lpm)	Max. Flow (m ³ /hr)
HSBJ40-316	HydroScientific™ SB 40 Jumbo Filter Housing, ML, EP	2" FNPT	1"	1/4"	-	-	50	189	12
HSBJ90-316	HydroScientific™ SB 90 Jumbo Filter Housing, ML, EP	2" FNPT	1"	1/4"	-	-	100	378	24
HSBJ170-316	HydroScientific™ SB 170 Jumbo Filter Housing, ML, EP	2" FNPT	1"	1/4"	-	-	150	568	36
HSBJ170SB-3-316	HydroScientific™ SB 3 x 170 Jumbo Filter Housing, ML, EP	4" FL	1½"	1/2"	1/2"	-	450	1703	102
HSBJ170SB-4-316	HydroScientific™ SB 4 x 170 Jumbo Filter Housing, ML, EP	6" FL	1½"	1/2"	1/2"	-	600	2271	144
HSBJ170SB-5-316	HydroScientific™ SB 5 x 170 Jumbo Filter Housing, ML, EP	6" FL	1½"	1/2"	1/2"	-	750	2839	170
HSBJ170SB-8-316	HydroScientific™ SB 8 x 170 Jumbo Filter Housing, ML, EP	6" FL	1½"	1/2"	1/2"	-	1200	4542	272
HSBJ170SB-12-316	HydroScientific™ SB 12 x 170 Jumbo Filter Housing, ML, GB	12" FL	1½"	1/2"	1/2"	✓	1800	6814	432
HSBJ170SB-16-316	HydroScientific™ SB 16 x 170 Jumbo Filter Housing, ML, GB	12" FL	2"	1/2"	1/2"	✓	2400	9085	576

SB = SWING BOLT, ML = LEGS, EP = ELECTROPOLISH, GB = GLASS BEAD, FL = FLANGE

HSBJ SERIES

Swing Bolt Jumbo Filter Housings
Data Sheet

APPLICATIONS

- Residential, Commercial, Industrial and Municipal
- Cooling Tower Filtration
- Whole House Filtration
- Process Water
- Well Water
- Small Community Compliance
- Industrial Waste Water Treatment

ADDITIONAL FEATURES

Finish: Electropolished and Bead Blasted Standard
 Drains: Clean and Dirty standard on all models
 Gauge Ports: Clean and Dirty standard on all models

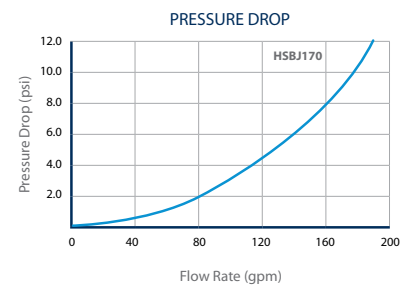
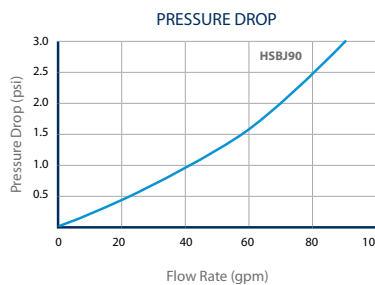
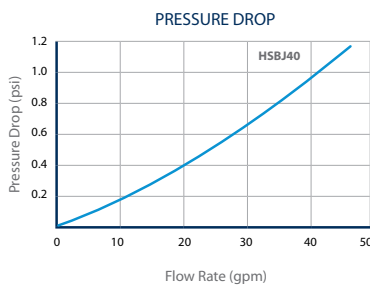
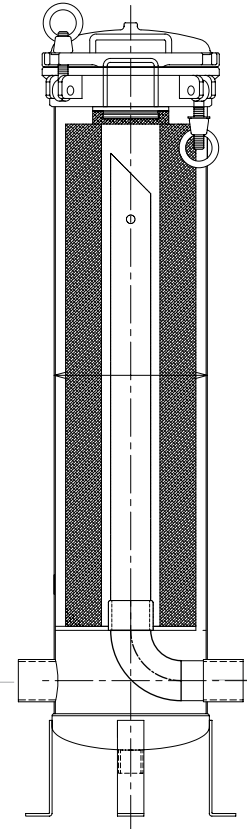
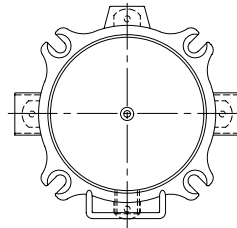
MATERIALS OF CONSTRUCTION

Housing Shell: 304 or 316 stainless steel
 Lid Closure: Zinc Plated Steel
 Vent and Drain Plugs: 304 or 316 stainless steel
 Heavy Duty Mounting Legs: 304 or 316 stainless steel
 O-Ring / Gasket: EPDM - FDA Grade (Viton, Silicone and EPR Options)

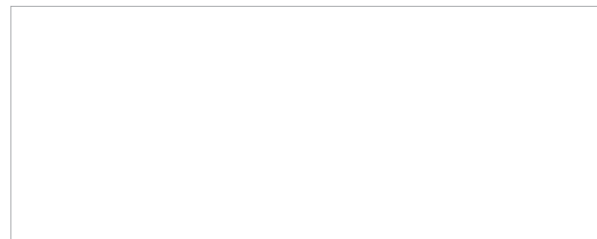
OPERATIONAL DATA

Max. Working Pressure: 150 psi at 300 °F (10.3 bar at 149 °C)
 Max. Operating Temperature: 300 °F (149 °C)

Copyright © 2021 HydroScientific., All Rights Reserved.



DISTRIBUTED BY:



P.O. Box 2235 Chino Hills, CA 91709 | USA
 sales@hydronixwater.com