



neoFIT
Product Catalogue



neofIT

Table of Contents

| | |
|--------------------------------------|----|
| Specification Sheet | 1 |
| Inch Acetal | 2 |
| Inch Acetal Swivel | 8 |
| Metric Acetal | 10 |
| Metric Acetal Swivel | 15 |
| Acetal Valves | 16 |
| Inch Polypropylene White | 18 |
| Polypropylene White Valves | 20 |
| Accessories | 21 |
| Chemical Compatibility | 23 |

Technical Specifications

Reliable Product

NeoFit was established to produce fittings and valves for water, beverages and drink dispensers. NeoFit is certified by ISO9001 and ISO14001 in quality management and environmental management system. NeoFit is proud to claim that our products have been certified by NSF International against NSF/ANSI Standards 51 and 61 for material requirements.

Easy Operation

NeoFit is a one-touch connection type without tools. It provides users with a more comfortable and efficient working operation. NeoFit is highly suitable for water, beverages and drink dispensers.

Applications and Features

NeoFit products are designed for water, food, and air contact but can be used with selected gases, vacuum & liquids. Our Oval Collets provide better ergonomics; easier to operate to disconnect. A single action allows the tube to release and connect easily, saving time and expense. NeoFit products are made of NSF approved non-toxic materials. Various uses depending on the user's environment and application.

Metric Size Fitting / Inch Size Fitting / Large Size Fitting

One-touch type enabling easy to attach and detach, safe use. NBR O-ring allows excellent sealing function and high durability against leakage. Made of FDA-approved material ensuring its safety, certified as NSF 51, 61. Food and beverage fittings with oval sleeves.

Range of Products

Check Valves

Non-return valve that allows fluid to flow only in one direction. Usable for water, food, and beverage. Compact size for confined spaces. Easy to install and convenient to use.

Flow Control Valves

Valve that discharges constant flow by controlling small flow rate. Usable for water, food, and beverage. Flow rate increase/decrease controller available under any spatial changes. Securable stability under any temperature changes.

Ball Valves

Valve to open and close the supply of compressed air and water. Usable for air and water, convenient for use in confined space. Size adjustable to fit in the hose. Size adjustable to fit all tube sizes.

Filter Strainers

Usable for water, food, and beverage. Filter out fine impurities with stainless steel filter net. Easy filter installation and replacement.

Color Options

Our color options consist of black and grey—with capability of providing white.

Cartridges

Effectively inserting and using a counterpart with a cavity in the counterpart. Composed of half & full cartridges made of acetal materials.

Accessories

Locking clips, spanner wrenches, and tube supports are made of FDA-approved material ensuring its safety, certified as NSF 51, 61.

Specifications

- NeoFit products are designed for water, food, and air contact.
- Fluid type: Water, Beverages
- Working Pressure: 0-230 PSI / 0-16kgf/cm²
- Working Temperature: 34~140° F / 0~60°C
- Applicable Tube: Polyethylene(PE), Polyamide(PA), and Polyurethane(PUO).

Pressure Ratings

| | 1/4" (6mm) | 3/8" (10mm) | 1/2" (22mm) |
|----------------|------------------|------------------|------------------|
| 33°F (0.6°C) | 290 psi (20 bar) | 232 psi (16 bar) | 203 psi (14 bar) |
| 68°F (20°C) | 290 psi (20 bar) | 232 psi (16 bar) | 203 psi (14 bar) |
| 150°F (65.6°C) | 232 psi (16 bar) | 203 psi (14 bar) | 116 psi (8 bar) |

Temperatures and Pressures indicated refers to NSF standard limits. Please contact our technical department for higher temperature and /or pressure application needs.

Max Torque Ratings

| Thread Size | 1/8" | 1/4" | 3/8" | 1/2" | 3/4" |
|-------------|------------------|------------------|----------------|----------------|----------------|
| Max Torque | 1 ft/lb (1.5 Nm) | 1 ft/lb (1.5 Nm) | 2 ft/lb (3 Nm) | 2 ft/lb (3 Nm) | 3 ft/lb (4 Nm) |

*Max torque ratings apply to all thread types

Acetal Fittings Construction

Acetal, also known as polyoxymethylene (POM), is a versatile engineering thermoplastic material known for its excellent mechanical properties and resistance to various environmental factors. Key features include:

High Mechanical Strength:

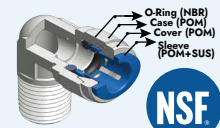
Acetal exhibits high tensile strength, making it suitable for load-bearing applications.

Chemical Resistance:

It is resistant to many chemicals, including solvents, fuels, and oils, making it suitable for various industrial applications.

FDA Approval:

Acetal grades are FDA approved for use in food contact applications due to their low toxicity and resistance to moisture absorption.



This fitting is Tested and Certified by NSF International against NSF/ANSI Standard 51, 61 for material requirements only.

Component

neoFIT

Inch Acetal

Add W to end of part number for white, -W for natural white, -E for Black, and -G for gray. Gray pictured below. Example: AMC4M-N1-W



The neoFit Acetal Fittings are manufactured with gray, black, or white acetal copolymer material meeting the requirements of FDA and NSF Standards 51 and 61. These fittings are recommended for use with water and food/beverage applications.

| Max Torque Ratings | | | | | |
|--------------------|---------------------|---------------------|-------------------|-------------------|-------------------|
| Thread Size | 1/8" | 1/4" | 3/8" | 1/2" | 3/4" |
| Max Torque | 1 ft/lb (1.5 Nm) | 1 ft/lb (1.5 Nm) | 2 ft/lb (3 Nm) | 2 ft/lb (3 Nm) | 3 ft/lb (4 Nm) |

| Pressure Ratings | | | |
|------------------|------------------|------------------|------------------|
| | 1/4" (6mm) | 3/8" (10mm) | 1/2" (22mm) |
| 33°F (0.6°C) | 290 psi (20 bar) | 232 psi (16 bar) | 203 psi (14 bar) |
| 68°F (20°C) | 290 psi (20 bar) | 232 psi (16 bar) | 203 psi (14 bar) |
| 150°F (65.6°C) | 232 psi (16 bar) | 203 psi (14 bar) | 116 psi (8 bar) |

Temperatures and Pressures indicated refers to NSF standard limits, Please contact our technical department for higher temperature and /or pressure application needs.



| Part Number | Tube OD | Thread NPTF | Bag Qty | Box Qty |
|-------------|---------|-------------|---------|---------|
| AMC4M-N1 | 5/32" | 1/8" | 10 | |
| AMC4M-N2 | 5/32" | 1/4" | 10 | |
| AMC3-N1 | 3/16" | 1/8" | 10 | 400 |
| AMC3-N2 | 3/16" | 1/4" | 10 | |
| AMC4-N1 | 1/4" | 1/8" | 10 | 350 |
| AMC4-N2 | 1/4" | 1/4" | 10 | 300 |
| AMC4-N3 | 1/4" | 3/8" | 10 | 300 |
| AMC4-N4 | 1/4" | 1/2" | 10 | 250 |
| AMC8M-N1 | 5/16" | 1/8" | 10 | 300 |
| AMC8M-N2 | 5/16" | 1/4" | 10 | 300 |
| AMC8M-N3 | 5/16" | 3/8" | 10 | |
| AMC8M-N4 | 5/16" | 1/2" | 10 | |
| AMC6-N1 | 3/8" | 1/8" | 10 | 250 |
| AMC6-N2 | 3/8" | 1/4" | 10 | 0 |
| AMC6-N3 | 3/8" | 3/8" | 10 | 0 |
| AMC6-N4 | 3/8" | 1/2" | 10 | 0 |
| AMC8-N3 | 1/2" | 3/8" | 10 | 180 |
| AMC8-N4 | 1/2" | 1/2" | 5 | 150 |



| Part Number | Tube OD | Thread BSP(P) | Bag Qty | Box Qty |
|-------------|---------|---------------|---------|---------|
| AMC4M-G1 | 5/32" | 1/8" | 10 | |
| AMC4M-G2 | 5/32" | 1/4" | 10 | |
| AMC3-G1 | 3/16" | 1/8" | 10 | |
| AMC3-G2 | 3/16" | 1/4" | 10 | |
| AMC4-G1 | 1/4" | 1/8" | 10 | |
| AMC4-G2 | 1/4" | 1/4" | 10 | |
| AMC8M-G1 | 5/16" | 1/8" | 10 | |
| AMC8M-G2 | 5/16" | 1/4" | 10 | |
| AMC8M-G3 | 5/16" | 3/8" | 10 | |
| AMC6-G1 | 3/8" | 1/8" | 10 | |
| AMC6-G2 | 3/8" | 1/4" | 10 | 300 |
| AMC6-G3 | 3/8" | 3/8" | 10 | |
| AMC6-G4 | 3/8" | 1/2" | 10 | |
| AMC8-G3 | 1/2" | 3/8" | 10 | |
| AMC8-G4 | 1/2" | 1/2" | 10 | |



| Part Number | Tube OD | Thread BSPT | Bag Qty | Box Qty |
|-------------|---------|-------------|---------|---------|
| AMC4M-R1 | 5/32" | 1/8" | 10 | |
| AMC4M-R2 | 5/32" | 1/4" | 10 | |
| AMC3-R1 | 3/16" | 1/8" | 10 | |
| AMC3-R2 | 3/16" | 1/4" | 10 | |
| AMC4-R1 | 1/4" | 1/8" | 10 | 400 |
| AMC4-R2 | 1/4" | 1/4" | 10 | 350 |
| AMC4-R3 | 1/4" | 3/8" | 10 | |
| AMC4-R4 | 1/4" | 1/2" | 10 | |
| AMC8M-R1 | 5/16" | 1/8" | 10 | |
| AMC8M-R2 | 5/16" | 1/4" | 10 | |
| AMC8M-R3 | 5/16" | 3/8" | 10 | |
| AMC6-R1 | 3/8" | 1/8" | 10 | |
| AMC6-R2 | 3/8" | 1/4" | 10 | |
| AMC6-R3 | 3/8" | 3/8" | 10 | |
| AMC6-R4 | 3/8" | 1/2" | 10 | |
| AMC8-R3 | 1/2" | 3/8" | 10 | |
| AMC8-R4 | 1/2" | 1/2" | 10 | |

NeoFit Fittings Inch Acetal

Add W to end of part number for white, -W for natural white, -E for Black, and -G for gray. Gray pictured below. Example: AMC4M-N1-W



| Part Number | Tube OD | Thread BSP(P) | Bag Qty | Box Qty |
|-------------|---------|---------------|---------|---------|
| AMCB3-G1 | 3/8" | 1/8" | 10 | |
| AMCB3-G2 | 3/8" | 1/4" | 10 | |



| Part Number | Tube OD | Thread MFL | Bag Qty | Box Qty |
|-------------|---------|------------|---------|---------|
| AMC8M-FL5 | 5/16" | 5/16" | 10 | |
| AMC6-FL4 | 3/8" | 1/4" | 10 | |
| AMC8M-FL8 | 5/16" | 1/2" | 10 | |



| Part Number | Tube OD | Thread BSW | Bag Qty | Box Qty |
|-------------|---------|------------|---------|---------|
| AMC4-BW9 | 1/4" | 9/16" | 10 | |
| AMC8M-BW8 | 5/16" | 1/2" | 10 | |
| AMC8M-BW9 | 5/16" | 9/16" | 10 | |
| AMC6-BW8 | 3/8" | 1/2" | 10 | |
| AMC6-BW9 | 3/8" | 9/16" | 10 | |



| Part Number | Tube OD | Thread NPTF | Bag Qty | Box Qty |
|-------------|---------|-------------|---------|---------|
| AME4M-N1 | 5/32" | 1/8" | 10 | |
| AME3-N1 | 3/16" | 1/8" | 10 | |
| AME4-N1 | 1/4" | 1/8" | 10 | 400 |
| AME4-N2 | 1/4" | 1/4" | 10 | 300 |
| AME4-N3 | 1/4" | 3/8" | 10 | 300 |
| AME8M-N2 | 5/16" | 1/4" | 10 | |
| AME8M-N3 | 5/16" | 3/8" | 10 | |
| AME6-N2 | 3/8" | 1/4" | 10 | 250 |
| AME6-N3 | 3/8" | 3/8" | 10 | 250 |
| AME6-N4 | 3/8" | 1/2" | 10 | |
| AME8-N3 | 1/2" | 3/8" | 5 | 150 |
| AME8-N4 | 1/2" | 1/2" | 5 | 120 |



| Part Number | Tube OD | Tube OD | Bag Qty | Box Qty |
|-------------|---------|---------|---------|---------|
| AEU44M | 5/32" | 5/32" | 10 | |
| AEU33 | 3/16" | 3/16" | 10 | |
| AEU44 | 1/4" | 1/4" | 10 | 300 |
| AEU84M | 5/16" | 5/32" | 10 | |
| AEU8M2 | 5/16" | 3/16" | 10 | |
| AEU8M4 | 5/16" | 1/4" | 10 | |
| AEU88M | 5/16" | 5/16" | 10 | |
| AEU63 | 3/8" | 3/16" | 10 | |
| AEU64 | 3/8" | 1/4" | 10 | 200 |
| AEU8M6 | 3/8" | 5/16" | 10 | 200 |
| AEU66 | 3/8" | 3/8" | 10 | 200 |
| AEU68 | 3/8" | 1/2" | 10 | |
| AEU84 | 1/2" | 1/4" | 10 | |
| AEU8M8 | 1/2" | 5/16" | 10 | |
| AEU86 | 1/2" | 3/8" | 5 | 0 |
| AEU88 | 1/2" | 1/2" | 5 | 0 |



| Part Number | Tube OD | Stem OD | Bag Qty | Box Qty |
|-------------|---------|---------|---------|---------|
| ATEU44M | 5/32" | 5/32" | 10 | |
| ATEU33 | 3/16" | 3/16" | 10 | |
| ATEU36 | 3/16" | 3/8" | 10 | |
| ATEU44 | 1/4" | 1/4" | 10 | 0 |
| ATEU48M | 5/16" | 1/4" | 10 | |
| ATEU46 | 1/4" | 3/8" | 10 | 350 |
| ATEU88M | 5/16" | 5/16" | 10 | |
| ATEU8M6 | 5/16" | 3/8" | 10 | 300 |
| ATEU66 | 3/8" | 3/8" | 10 | 0 |
| ATEU68 | 3/8" | 1/2" | 10 | |
| ATEU88 | 1/2" | 1/2" | 5 | 125 |

NeoFit Fittings Inch Acetal

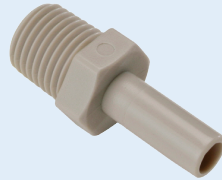
Add W to end of part number for white, -W for natural white, -E for Black, and -G for gray. Gray pictured below. Example: AMC4M-N1-W

Stem Adapter NPTF



| Part Number | Stem OD | Thread NPTF | Bag Qty | Box Qty |
|-------------|---------|-------------|---------|---------|
| ASA4M-N1 | 5/32" | 1/8" | 10 | 550 |
| ASA4M-N2 | 5/32" | 1/4" | 10 | 450 |
| ASA3-N1 | 3/16" | 1/8" | 10 | 500 |
| ASA4-N1 | 1/4" | 1/8" | 10 | 400 |
| ASA4-N2 | 1/4" | 1/4" | 10 | 300 |
| ASA8M-N1 | 5/16" | 1/8" | 10 | 400 |
| ASA8M-N2 | 5/16" | 1/4" | 10 | 400 |
| ASA8M-N3 | 5/16" | 3/8" | 10 | 250 |
| ASA6-N2 | 3/8" | 1/4" | 10 | 300 |
| ASA6-N3 | 3/8" | 3/8" | 10 | 300 |
| ASA8-N3 | 1/2" | 3/8" | 10 | 250 |
| ASA8-N4 | 1/2" | 1/2" | 5 | 125 |

Stem Adapter BSPT



| Part Number | Stem OD | Thread BSPT | Bag Qty | Box Qty |
|-------------|---------|-------------|---------|---------|
| ASA3-R1 | 3/16" | 1/8" | 10 | |
| ASA8M-R2 | 5/16" | 1/4" | 10 | |
| ASA8M-R3 | 5/16" | 3/8" | 10 | |
| ASA6-R2 | 3/8" | 1/4" | 10 | |
| ASA6-R3 | 3/8" | 3/8" | 10 | |
| ASA8-R4 | 1/2" | 1/2" | 10 | |

Stem Adapter BSW



| Part Number | Stem OD | Thread BSW | Bag Qty | Box Qty |
|-------------|---------|------------|---------|---------|
| ASA8M-BW9 | 5/16" | 9/16" | 10 | |
| ASA6-BW8 | 3/8" | 1/2" | 10 | |
| ASA6-BW9 | 3/8" | 9/16" | 10 | |

Stem Adapter BSP (P)



| Part Number | Stem OD | Thread BSP(P) | Bag Qty | Box Qty |
|-------------|---------|---------------|---------|---------|
| ASA6-G2 | 3/8" | 1/4" | 10 | |
| ASA6-G3 | 3/8" | 3/8" | 10 | |
| ASA6-G4 | 3/8" | 1/2" | 10 | |
| ASA8-G4 | 1/2" | 1/2" | 10 | |

Female Adapter NPTF



| Part Number | Tube OD | Thread NPTF | Bag Qty | Box Qty |
|-------------|---------|-------------|---------|---------|
| AFA4-N1 | 1/4" | 1/8" | 10 | |
| AFA4-N2 | 1/4" | 1/4" | 10 | 250 |
| AFA8M-N1 | 5/16" | 1/8" | 10 | |
| AFA8M-N2 | 5/16" | 1/4" | 10 | |
| AFA6-N1 | 3/8" | 1/8" | 10 | |
| AFA6-N2 | 3/8" | 1/4" | 10 | 250 |

Female Faucet Adapter UNS Cone Type



| Part Number | Tube OD | Thread UNS | Bag Qty | Box Qty |
|-------------|---------|------------|---------|---------|
| AFAC4-US7 | 1/4" | 7/16-24 | 10 | 300 |
| AFAC8M-US7 | 5/16" | 7/16-24 | 10 | |
| AFAC6-US7 | 3/8" | 7/16-24 | 10 | 250 |

Female Adapter BSP(P) Flat Type Brass



| Part Number | Tube OD | Thread BSP(P) | Bag Qty | Box Qty |
|-------------|---------|---------------|---------|---------|
| AFAFB4-G4 | 1/4" | 1/2" | 10 | |
| AFAFB4-G6 | 1/4" | 3/4" | 10 | |
| AFAF8M-G6 | 5/16" | 3/4" | 10 | |
| AFAFB6-G6 | 3/8" | 3/4" | 10 | |

Female Adapter UN V-Type



| Part Number | Tube OD | Thread UN-V | Bag Qty | Box Qty |
|-------------|---------|-------------|---------|---------|
| AFAV8M-UN8 | 5/16" | 1/2-16 | 10 | |
| AFAV6-UN8 | 3/8" | 1/2-16 | 10 | |
| AFAV8-UN8 | 1/2" | 1/2-16 | 10 | |

Female Adapter Garden Hose FGHT



| Part Number | Tube OD | Thread FGHT | Bag Qty | Box Qty |
|-------------|---------|-------------|---------|---------|
| AFA4-NH6 | 1/4" | 3/4" | 5 | |
| AFA8M-NH6 | 5/16" | 3/4" | 10 | |
| AFA6-NH6 | 3/8" | 3/4" | 5 | |

NeoFit Fittings Inch Acetal

Add W to end of part number for white, -W for natural white, -E for Black, and -G for gray. Gray pictured below. Example: AMC4M-N1-W

Female Adapter
UNF V Type



| Part Number | Tube OD | Thread UNF | Bag Qty | Box Qty |
|-------------|---------|------------|---------|---------|
| AFAC4-UF7 | 1/4" | 7/16-20 | 10 | 300 |
| AFAC8M-UF7 | 5/16" | 7/16-20 | 10 | |
| AFAC6-UF7 | 3/8" | 7/16-20 | 10 | 250 |

Female Adapter
BSP(P) Flat Type



| Part Number | Tube OD | Thread BSP(P) | Bag Qty | Box Qty |
|-------------|---------|---------------|---------|---------|
| AFAF8M-G5 | 5/16" | 5/8 | 10 | |
| AFAF6-G3 | 3/8" | 3/8 | 10 | |
| AFAF6-G4 | 3/8" | 1/2 | 10 | |
| AFAF6-G5 | 3/8" | 5/8 | 10 | |
| AFAF8-G3 | 1/2" | 3/8 | 10 | |
| AFAF8-G4 | 1/2" | 1/2" | 10 | |
| AFAF8-G5 | 1/2" | 5/8" | 10 | |

Female Adapter
BSP(P) Cone Type



| Part Number | Tube OD | Thread BSP(P) | Bag Qty | Box Qty |
|-------------|---------|---------------|---------|---------|
| AFAC4-G3 | 1/4" | 3/8 | 10 | 200 |
| AFAC4-G4 | 1/4" | 1/2" | 5 | 100 |
| AFAC8M-G3 | 5/16" | 3/8 | 10 | |
| AFAC8M-G4 | 5/16" | 1/2" | 10 | |
| AFAC6-G3 | 3/8" | 3/8 | 5 | 150 |
| AFAC6-G4 | 3/8" | 1/2" | 5 | 130 |
| AFAC6-G5 | 3/8" | 5/8 | 10 | |
| AFAC8-G5 | 1/2" | 5/8 | 10 | |
| AFAC8-G4 | 1/2" | 1/2 | 10 | |

Female Adapter
UNF Cone Type



| Part Number | Tube OD | Thread UNF-V | Bag Qty | Box Qty |
|-------------|---------|--------------|---------|---------|
| AFAV4-UF7 | 1/4" | 7/16-20 | 10 | |
| AFAV8M-UF7 | 5/16" | 7/16-20 | 10 | |
| AFAV6-UF7 | 3/8" | 7/16-20 | 10 | |
| AFAV6-UF10 | 3/8" | 5/8"-18 | 10 | |

Both Female Union 3/4" Adapter
BSP(P)



| Part Number | Tube OD | Thread BSP(P) | Bag Qty | Box Qty |
|-------------|---------|---------------|---------|---------|
| AFUG2-G6 | 1/4" | 3/4" | 10 | |

Enlarger



| Part Number | Tube OD | Stem OD | Bag Qty | Box Qty |
|-------------|---------|---------|---------|---------|
| AEL8M6 | 3/8" | 5/16" | 10 | |
| AEL86 | 1/2" | 3/8" | 10 | |

Offset Connector



| Part Number | Tube OD | Tube OD | Bag Qty | Box Qty |
|-------------|---------|---------|---------|---------|
| AOC64 | 3/8" | 1/4" | 10 | |
| AOC8M8 | 1/2" | 5/16" | 10 | |

Stackable Tee



| Part Number | Tube OD | Stem OD | Bag Qty | Box Qty |
|-------------|---------|---------|---------|---------|
| ATRU444 | 1/4" | 1/4" | 10 | 300 |
| ATRU666 | 3/8" | 3/8" | 5 | 130 |
| ATRU888 | 1/2" | 1/2" | 5 | 90 |

Branch Stem Tee



| Part Number | Tube OD | Stem OD | Bag Qty | Box Qty |
|-------------|---------|---------|---------|---------|
| ATBU444 | 1/4" | 1/4" | 10 | |
| ATBU666 | 3/8" | 3/8" | 5 | |
| ATBU888 | 1/2" | 1/2" | 5 | |

NeoFit Fittings Inch Acetal

Add **W** to end of part number for white, **-W** for natural white, **-E** for Black, and **-G** for gray. Gray pictured below. Example: **AMC4M-N1-W**

Three Way Divider



| Part Number | Tube OD | Tube OD | Bag Qty | Box Qty |
|-------------|---------|---------|---------|---------|
| ATHWD64 | 3/8" | 1/4" | 10 | |
| ATHWD86 | 1/2" | 3/8" | 20 | 60 |
| ATHWD88 | 1/2" | 1/2" | 20 | 40 |

U Bend



| Part Number | Tube OD | Tube OD | Bag Qty | Box Qty |
|-------------|---------|---------|---------|---------|
| AUB44 | 1/4" | 1/4" | 10 | |
| AUB88M | 5/16" | 5/16" | 10 | |
| AUB66 | 3/8" | 3/8" | 5 | 100 |
| AUB88 | 1/2" | 1/2" | 5 | 80 |

Two Way Divider



| Part Number | Tube OD | Tube OD | Bag Qty | Box Qty |
|-------------|---------|---------|---------|---------|
| ATWD44M | 5/32" | 5/32" | 10 | |
| ATWD44 | 1/4" | 1/4" | 10 | 250 |
| ATWD88M | 5/16" | 5/16" | 10 | |
| ATWD8M6 | 3/8" | 5/16" | 10 | |
| ATWD66 | 3/8" | 3/8" | 5 | 125 |
| ATWD68 | 3/8" | 1/2" | 10 | |
| ATWD88 | 1/2" | 1/2" | 20 | 80 |

Tube End Stop



| Part Number | Tube OD | Bag Qty | Box Qty |
|-------------|---------|---------|---------|
| ATES4M | 5/32" | 10 | |
| ATES3 | 3/16" | 10 | |
| ATES4 | 1/4" | 10 | 450 |
| ATES8M | 5/16" | 10 | |
| ATES6 | 3/8" | 10 | 300 |
| ATES8 | 1/2" | 10 | 250 |
| ATES10 | 5/8" | 10 | |

Bulkhead Union



| Part Number | Tube OD | Tube OD | Bag Qty | Box Qty |
|-------------|---------|---------|---------|---------|
| ABU44M | 5/32" | 5/32" | 10 | |
| ABU33 | 3/16" | 3/16" | 10 | |
| ABU44 | 1/4" | 1/4" | 10 | 250 |
| ABU46 | 1/4" | 3/8" | 10 | |
| ABU88M | 5/16" | 5/16" | 10 | |
| ABU64 | 3/8" | 1/4" | 5 | 100 |
| ABU66 | 3/8" | 3/8" | 5 | 100 |
| ABU88 | 1/2" | 1/2" | 5 | 80 |

Plug



| Part Number | Tube OD | Bag Qty | Box Qty |
|-------------|---------|---------|---------|
| APL4M | 5/32" | 10 | |
| APL3 | 3/16" | 10 | |
| APL4 | 1/4" | 10 | 550 |
| APL8M | 5/16" | 10 | |
| APL6 | 3/8" | 10 | 400 |
| APL8 | 1/2" | 10 | 300 |

Cross



| Part Number | Tube OD | Tube OD | Bag Qty | Box Qty |
|-------------|---------|---------|---------|---------|
| ACR44M | 5/32" | 5/32" | 10 | |
| ACR44 | 1/4" | 1/4" | 10 | |
| ACR88M | 5/16" | 5/16" | 10 | |
| ACR66 | 3/8" | 3/8" | 10 | |
| ACR88 | 1/2" | 1/2" | 10 | |

Cooling Manifold



| Part Number | Tube OD | Tube OD | Bag Qty | Box Qty |
|-------------|---------|---------|---------|---------|
| ACMT868 | 1/2" | 3/8" | 5 | 60 |

NeoFit Fittings Inch Acetal

Add W to end of part number for white, -W for natural white, -E for Black, and -G for gray. Gray pictured below. Example: AMC4M-N1-W

Union Connector



| Part Number | Tube OD | Tube OD | Bag Qty | Box Qty |
|-------------|---------|---------|---------|---------|
| AUC44M | 5/32" | 5/32" | 10 | |
| AUC33 | 3/16" | 3/16" | 10 | |
| AUC4M4 | 1/4" | 5/32" | 10 | |
| AUC43 | 1/4" | 3/16" | 10 | |
| AUC44 | 1/4" | 1/4" | 10 | 300 |
| AUC84M | 5/16" | 5/32" | 10 | |
| AUC8M3 | 5/16" | 3/16" | 10 | |
| AUC8M4 | 5/16" | 1/4" | 10 | 300 |
| AUC88M | 5/16" | 5/16" | 10 | |
| AUC4M6 | 3/8" | 5/32" | 10 | |
| AUC63 | 3/8" | 3/16" | 10 | |
| AUC64 | 3/8" | 1/4" | 10 | 250 |
| AUC68M | 3/8" | 5/16" | 10 | 250 |
| AUC66 | 3/8" | 3/8" | 10 | 200 |
| AUC68 | 3/8" | 1/2" | 10 | |
| AUC75M6 | 3/8" | 7.5 mm | 10 | |
| AUC8M8 | 1/2" | 5/16" | 10 | |
| AUC86 | 1/2" | 3/8" | 5 | 130 |
| AUC88 | 1/2" | 1/2" | 5 | 0 |
| AUC12M6 | 12 mm | 3/8" | 10 | |

Reducer



| Part Number | Tube OD | Stem OD | Bag Qty | Box Qty |
|-------------|---------|---------|---------|---------|
| ARD4M4 | 5/32" | 1/4" | 10 | 500 |
| ARD8M4 | 1/4" | 5/16" | 10 | 450 |
| ARD46 | 1/4" | 3/8" | 10 | 350 |
| ARD8M6 | 3/8" | 5/16" | 10 | 300 |
| ARD63 | 3/16" | 3/8" | 10 | 400 |
| ARD65 | 5/16" | 3/8" | 10 | 300 |
| ARD68 | 1/2" | 3/8" | 10 | 200 |
| ARD8M8 | 5/16" | 1/2" | 5 | |
| ARD86 | 3/8" | 1/2" | 5 | 200 |

Stem Barb Connector



| Part Number | Stem OD | Barb ID | Bag Qty | Box Qty |
|-------------|---------|---------|---------|---------|
| ATBC43 | 1/4" | 3/16" | 10 | 500 |
| ATBC44 | 1/4" | 1/4" | 10 | 400 |
| ATBC88M | 5/16" | 5/16" | 10 | 400 |
| ATBC8M6 | 5/16" | 3/8" | 10 | 400 |
| ATBC64 | 3/8" | 1/4" | 10 | 400 |
| ATBC68M | 3/8" | 5/16" | 10 | 400 |
| ATBC66 | 3/8" | 3/8" | 10 | 400 |
| ATBC68 | 3/8" | 1/2" | 10 | 250 |
| ATBC86 | 1/2" | 3/8" | 10 | 300 |
| ATBC88 | 1/2" | 1/2" | 10 | 250 |

Stem Barb Elbow Connector



| Part Number | Stem OD | Barb ID | Bag Qty | Box Qty |
|-------------|---------|---------|---------|---------|
| ATEB8M4 | 5/16" | 1/4" | 10 | |
| ATEB68M | 3/8" | 5/16" | 10 | 350 |
| ATEB66 | 3/8" | 3/8" | 10 | 350 |

Add W to end of part number for white, -W for natural white, -E for Black, and -G for gray. Gray pictured below. Example: AMC4M-N1-W

neofIT

Inch Acetal Swivel



NSF 51
NSF 61

The neoFit Acetal Fittings are manufactured with gray, black, or white acetal copolymer material meeting the requirements of FDA and NSF Standards 51 and 61. These fittings are recommended for use with water and food/beverage applications. Swivel fittings allow the tube connection to be oriented in any direction while allowing the threaded end to be tightened to proper torque allowance. Swivel fittings are packaged as two separate pieces and require the user to assemble.

| Max Torque Ratings | | | | | |
|--------------------|---------------------|---------------------|-------------------|-------------------|-------------------|
| Thread Size | 1/8" | 1/4" | 3/8" | 1/2" | 3/4" |
| Max Torque | 1 ft/lb (1.5 Nm) | 1 ft/lb (1.5 Nm) | 2 ft/lb (3 Nm) | 2 ft/lb (3 Nm) | 3 ft/lb (4 Nm) |

| Pressure Ratings | | | |
|------------------|------------------|------------------|------------------|
| | 1/4" (6mm) | 3/8" (10mm) | 1/2" (22mm) |
| 33°F (0.6°C) | 290 psi (20 bar) | 232 psi (16 bar) | 203 psi (14 bar) |
| 68°F (20°C) | 290 psi (20 bar) | 232 psi (16 bar) | 203 psi (14 bar) |
| 150°F (65.6°C) | 232 psi (16 bar) | 203 psi (14 bar) | 116 psi (8 bar) |

Temperatures and Pressures indicated refers to NSF standard limits, Please contact our technical department for higher temperature and /or pressure application needs.

Male Branch Tee Swivel
NPTF



| Part Number | Tube OD | Thread NPTF | Bag Qty | Box Qty |
|-------------|---------|-------------|---------|---------|
| AMTS4M-N1 | 5/32" | 1/8" | 10 | |
| AMTS4M-N2 | 5/32" | 1/4" | 10 | |
| AMTS3-N1 | 3/16" | 1/8" | 10 | |
| AMTS4-N1 | 1/4" | 1/8" | 10 | |
| AMTS4-N2 | 1/4" | 1/4" | 10 | |
| AMTS8M-N1 | 5/16" | 1/8" | 10 | |
| AMTS8M-N2 | 5/16" | 1/4" | 10 | |
| AMTS8M-N3 | 5/16" | 3/8" | 10 | |
| AMTS6-N2 | 3/8" | 1/4" | 10 | |
| AMTS6-N3 | 3/8" | 3/8" | 10 | |
| AMTS8-N3 | 1/2" | 3/8" | 10 | |
| AMTS8-N4 | 1/2" | 1/2" | 10 | |

Male Run Tee Swivel
NPTF



| Part Number | Tube OD | Thread NPTF | Bag Qty | Box Qty |
|-------------|---------|-------------|---------|---------|
| AMRS4M-N1 | 5/32" | 1/8" | 10 | |
| AMRS4M-N2 | 5/32" | 1/4" | 10 | |
| AMRS3-N1 | 3/16" | 1/8" | 10 | |
| AMRS4-N1 | 1/4" | 1/8" | 10 | |
| AMRS4-N2 | 1/4" | 1/4" | 10 | |
| AMRS8M-N1 | 5/16" | 1/8" | 10 | |
| AMRS8M-N2 | 5/16" | 1/4" | 10 | |
| AMRS8M-N3 | 5/16" | 3/8" | 10 | |
| AMRS6-N2 | 3/8" | 1/4" | 10 | |
| AMRS6-N3 | 3/8" | 3/8" | 10 | |
| AMRS8-N3 | 1/2" | 3/8" | 10 | |
| AMRS8-N4 | 1/2" | 1/2" | 10 | |

Male Elbow Swivel
NPTF



| Part Number | Tube OD | Thread NPTF | Bag Qty | Box Qty |
|-------------|---------|-------------|---------|---------|
| AMES4M-N1 | 5/32" | 1/8" | 10 | |
| AMES3-N1 | 3/16" | 1/8" | 10 | |
| AMES4-N1 | 1/4" | 1/8" | 10 | |
| AMES4-N2 | 1/4" | 1/4" | 10 | |
| AMES8M-N1 | 5/16" | 1/8" | 10 | |
| AMES8M-N2 | 5/16" | 1/4" | 10 | |
| AMES8M-N3 | 5/16" | 3/8" | 10 | |
| AMES6-N2 | 3/8" | 1/4" | 10 | |
| AMES6-N3 | 3/8" | 3/8" | 10 | |
| AMES8-N3 | 1/2" | 3/8" | 10 | |
| AMES8-N4 | 1/2" | 1/2" | 10 | |

NeoFit Fittings

Inch Acetal Swivel

Add W to end of part number for white, -W for natural white, -E for Black, and -G for gray. Gray pictured below. Example: AMC4M-N1-W



| Part Number | Tube OD | Thread BPST | Bag Qty |
|-------------|---------|-------------|---------|
| AMES4M-R2 | 5/32" | 1/4" | 10 |
| AMES3-R1 | 3/16" | 1/8" | 10 |
| AMES3-R2 | 3/16" | 1/4" | 10 |
| AMES3-R3 | 3/16" | 3/8" | 10 |
| AMES4-R2 | 1/4" | 1/4" | 10 |
| AMES4-R3 | 1/4" | 3/8" | 10 |
| AMES4-R4 | 1/4" | 1/2" | 10 |
| AMES8M-R2 | 5/16" | 1/4" | 10 |
| AMES8M-R3 | 5/16" | 3/8" | 10 |
| AMES8M-R4 | 5/16" | 1/2" | 10 |
| AMES6-R3 | 3/8" | 3/8" | 10 |
| AMES6-R4 | 3/8" | 1/2" | 10 |
| AMES8-R4 | 1/2" | 1/2" | 10 |

Add W to end of part number for white, -W for natural white, -E for Black, and -G for gray. Gray pictured below. Example: AMC4M-N1-W

neoFIT

Metric Acetal



The neoFit Acetal Fittings are manufactured with gray, black, or white acetal copolymer material meeting the requirements of FDA and NSF Standards 51 and 61. These fittings are recommended for use with water and food/beverage applications.

| Max Torque Ratings | | | | | |
|--------------------|---------------------|---------------------|-------------------|-------------------|-------------------|
| Thread Size | 1/8" | 1/4" | 3/8" | 1/2" | 3/4" |
| Max Torque | 1 ft/lb (1.5 Nm) | 1 ft/lb (1.5 Nm) | 2 ft/lb (3 Nm) | 2 ft/lb (3 Nm) | 3 ft/lb (4 Nm) |

| Pressure Ratings | | | |
|------------------|------------------|------------------|------------------|
| | 1/4" (6mm) | 3/8" (10mm) | 1/2" (22mm) |
| 33°F (0.6°C) | 290 psi (20 bar) | 232 psi (16 bar) | 203 psi (14 bar) |
| 68°F (20°C) | 290 psi (20 bar) | 232 psi (16 bar) | 203 psi (14 bar) |
| 150°F (65.6°C) | 232 psi (16 bar) | 203 psi (14 bar) | 116 psi (8 bar) |

Temperatures and Pressures indicated refers to NSF standard limits, Please contact our technical department for higher temperature and /or pressure application needs.

Male Connector
BSPT



| Part Number | Tube OD | Thread BSPT | Bag Qty | Box Qty |
|-------------|---------|-------------|---------|---------|
| AMC4M-R1 | 4mm | 1/8" | 10 | |
| AMC4M-R2 | 4mm | 1/4" | 10 | |
| AMC5M-R1 | 5mm | 1/8" | 10 | |
| AMC5M-R2 | 5mm | 1/4" | 10 | |
| AMC6M-R1 | 6mm | 1/8" | 10 | |
| AMC6M-R2 | 6mm | 1/4" | 10 | |
| AMC6M-R3 | 6mm | 3/8" | 10 | |
| AMC6M-R4 | 6mm | 1/2" | 10 | |
| AMC8M-R1 | 8mm | 1/8" | 10 | |
| AMC8M-R2 | 8mm | 1/4" | 10 | |
| AMC8M-R3 | 8mm | 3/8" | 10 | |
| AMC8M-R4 | 8mm | 1/2" | 10 | |
| AMC10M-R1 | 10mm | 1/8" | 10 | |
| AMC10M-R2 | 10mm | 1/4" | 10 | |
| AMC10M-R3 | 10mm | 3/8" | 10 | |
| AMC10M-R4 | 10mm | 1/2" | 10 | |
| AMC12M-R3 | 12mm | 3/8" | 10 | |
| AMC12M-R4 | 12mm | 1/2" | 10 | |

Elbow Union



| Part Number | Tube OD | Tube OD | Bag Qty | Box Qty |
|-------------|---------|---------|---------|---------|
| AEU44M | 4mm | 4mm | 10 | 400 |
| AEU88MM | 5mm | 5mm | 10 | |
| AEU64M | 6mm | 4mm | 10 | |
| AEU66M | 6mm | 6mm | 10 | |
| AEU84M | 8mm | 4mm | 10 | |
| AEU8M8M | 8mm | 5mm | 10 | |
| AEU86M | 8mm | 6mm | 10 | 250 |
| AEU88M | 8mm | 8mm | 10 | 250 |
| AEU105M | 10mm | 5mm | 10 | |
| AEU106M | 10mm | 6mm | 10 | |
| AEU108M | 10mm | 8mm | 10 | |
| AEU1010M | 10mm | 10mm | 10 | 200 |
| AEU126M | 12mm | 6mm | 10 | |
| AEU128M | 12mm | 8mm | 10 | |
| AEU1210M | 12mm | 10mm | 5 | 100 |
| AEU1212M | 12mm | 12mm | 5 | 100 |
| AEU1515M | 15mm | 15 | 5 | 80 |
| AEU2222M | 22mm | 22 | 40 | 40 |
| AEU2828M | 28mm | 28 | 10 | |

Male Elbow
BSPT



| Part Number | Tube OD | Thread BSPT | Bag Qty | Box Qty |
|-------------|---------|-------------|---------|---------|
| AME4M-R1 | 4mm | 1/8" | 10 | |
| AME4M-R2 | 4mm | 1/4" | 10 | |
| AME6M-R1 | 6mm | 1/8" | 10 | |
| AME6M-R2 | 6mm | 1/4" | 10 | |
| AME6M-R3 | 6mm | 3/8" | 10 | |
| AME8M-R2 | 8mm | 1/4" | 10 | |
| AME8M-R3 | 8mm | 3/8" | 10 | |
| AME10M-R2 | 10mm | 1/4" | 10 | |
| AME10M-R3 | 10mm | 3/8" | 10 | |
| AME12M-R2 | 12mm | 1/4" | 10 | |
| AME12M-R3 | 12mm | 3/8" | 10 | |
| AME12M-R4 | 12mm | 1/2" | 10 | |

NeoFit Fittings Metric Acetal

Add W to end of part number for white, -W for natural white, -E for Black, and -G for gray. Gray pictured below. Example: AMC4M-N1-W

Male Connector BSP(P)



| Part Number | Tube OD | Thread BSP(P) | Bag Qty | Box Qty |
|-------------|---------|---------------|---------|---------|
| AMC4M-G1 | 4mm | 1/8" | 10 | |
| AMC4M-G2 | 4mm | 1/4" | 10 | |
| AMC5M-G1 | 5mm | 1/8" | 10 | |
| AMC5M-G2 | 5mm | 1/4" | 10 | |
| AMC6M-G1 | 6mm | 1/8" | 10 | |
| AMC6M-G2 | 6mm | 1/4" | 10 | |
| AMC8M-G1 | 8mm | 1/8" | 10 | |
| AMC8M-G2 | 8mm | 1/4" | 10 | |
| AMC8M-G3 | 8mm | 3/8" | 10 | |
| AMC8M-G4 | 8mm | 1/2" | 10 | |
| AMC10M-G2 | 10mm | 1/4" | 10 | |
| AMC10M-G3 | 10mm | 3/8" | 10 | |
| AMC10M-G4 | 10mm | 1/2" | 10 | |
| AMC12M-G3 | 12mm | 3/8" | 10 | |
| AMC12M-G4 | 12mm | 1/2" | 10 | |

Reducer



| Part Number | Tube OD | Stem OD | Bag Qty | Box Qty |
|-------------|---------|---------|---------|---------|
| ARD45M | 4mm | 5mm | 10 | 500 |
| ARD46M | 4mm | 6mm | 10 | 400 |
| ARD48M | 4mm | 8mm | 10 | 300 |
| ARD56M | 5mm | 6mm | 10 | |
| ARD58M | 5mm | 8mm | 10 | |
| ARD68M | 6mm | 8mm | 10 | 400 |
| ARD88M | 8mm | 8mm | 10 | 300 |
| ARD106M | 6mm | 10mm | 10 | 300 |
| ARD1010M | 10mm | 10mm | 10 | |
| ARD108M | 8mm | 10mm | 10 | 250 |
| ARD128M | 8mm | 12mm | 10 | 250 |
| ARD1012M | 10mm | 12mm | 10 | 250 |
| ARD1015M | 10mm | 15mm | 5 | 130 |
| ARD1215M | 12mm | 15mm | 5 | 130 |

Tube Elbow Union



| Part Number | Tube OD | Stem OD | Bag Qty | Box Qty |
|-------------|---------|---------|---------|---------|
| ATEU44M | 4mm | 4mm | 10 | 500 |
| ATEU55M | 5mm | 5mm | 10 | |
| ATEU66M | 6mm | 6mm | 10 | 350 |
| ATEU68M | 6mm | 8mm | 10 | 350 |
| ATEU106M | 6mm | 10mm | 10 | 250 |
| ATEU88M | 8mm | 8mm | 10 | 350 |
| ATEU108M | 8mm | 10mm | 10 | 300 |
| ATEU1010M | 10mm | 10mm | 10 | 200 |
| ATEU1212M | 12mm | 12mm | 5 | 100 |
| ATEU1515M | 15mm | 15mm | 5 | 80 |

Female Adapter BSPT



| Part Number | Tube OD | Thread BSPT | Bag Qty | Box Qty |
|-------------|---------|-------------|---------|---------|
| AFA6M-R1 | 6mm | 1/8" | 10 | |
| AFA6M-R2 | 6mm | 1/4" | 10 | |
| AFA8M-R1 | 8mm | 1/8" | 10 | |
| AFA8M-R2 | 8mm | 1/4" | 10 | |
| AFA10M-R1 | 10mm | 1/8" | 10 | |
| AFA10M-R2 | 10mm | 1/4" | 10 | |

Female Adapter UN V-Type



| Part Number | Tube OD | Thread UN | Bag Qty | Box Qty |
|-------------|---------|-----------|---------|---------|
| AFAV8M-UN8 | 8mm | 1/2-16 | 10 | |
| AFAV10M-UN8 | 10mm | 1/2-16 | 10 | |
| AFAV12M-UN8 | 12mm | 1/2-16 | 10 | |

Female Faucet Adapter UNF Cone Type



| Part Number | Tube OD | Thread UNF | Bag Qty | Box Qty |
|-------------|---------|------------|---------|---------|
| AFAC6M-UF7 | 6mm | 7/16-20 | 10 | |
| AFAC8M-UF7 | 8mm | 7/16-20 | 10 | |
| AFAC10M-UF7 | 10mm | 7/16-20 | 10 | |

NeoFit Fittings Metric Acetal

Add W to end of part number for white, -W for natural white, -E for Black, and -G for gray. Gray pictured below. Example: AMC4M-N1-W

Female Faucet Adapter UNS Cone Type



| Part Number | Tube OD | Thread UN | Bag Qty | Box Qty |
|-------------|---------|-----------|---------|---------|
| AFAC6M-US7 | 6mm | 7/16-24 | 10 | |
| AFAC8M-US7 | 8mm | 7/16-24 | 10 | |
| AFAC10M-US7 | 10mm | 7/16-24 | 10 | |

Female Adapter BSP(P) Cone Type



| Part Number | Tube OD | Thread BSP(P) | Bag Qty | Box Qty |
|-------------|---------|---------------|---------|---------|
| AFAC6M-G3 | 6mm | 3/8 | 10 | |
| AFAC6M-G4 | 6mm | 1/2" | 10 | |
| AFAC8M-G3 | 8mm | 3/8 | 10 | |
| AFAC8M-G4 | 8mm | 1/2" | 10 | |
| AFAC10M-G3 | 10mm | 3/8 | 10 | |
| AFAC10M-G4 | 10mm | 1/2" | 10 | |
| AFAC10M-G5 | 10mm | 5/8 | 10 | |
| AFAC12M-G5 | 12mm | 5/8 | 10 | |

Female Adapter BSP(P) Flat Type



| Part Number | Tube OD | Thread BSP(P) | Bag Qty | Box Qty |
|-------------|---------|---------------|---------|---------|
| AFAF8M-G5 | 8mm | 5/8 | 10 | |
| AFAF10M-G2 | 10mm | 1/4" | 10 | |
| AFAF10M-G4 | 10mm | 1/2" | 10 | |
| AFAF10M-G5 | 10mm | 5/8 | 10 | |
| AFAF12M-G3 | 12mm | 3/8 | 10 | |
| AFAF12M-G4 | 12mm | 1/2 | 10 | |
| AFAF12M-G5 | 12mm | 5/8 | 10 | |

Female Adapter BSP(P) Flat Type



| Part Number | Tube OD | Thread BSP(P) | Bag Qty | Box Qty |
|-------------|---------|---------------|---------|---------|
| AFA6M-G6 | 6mm | 3/4" | 10 | |
| AFA8M-G6 | 8mm | 3/4" | 10 | |
| AFA10M-G6 | 10mm | 3/4" | 10 | |

Female Adapter Garden Hose FGHT



| Part Number | Tube OD | Thread FGHT | Bag Qty | Box Qty |
|-------------|---------|-------------|---------|---------|
| AFA6M-NH6 | 6mm | 3/4" | 10 | 90 |
| AFA8M-NH6 | 8mm | 3/4" | 10 | 90 |
| AFA10M-NH6 | 10mm | 3/4" | 10 | |

Female Adapter UNF V Type



| Part Number | Tube OD | Thread UNF | Bag Qty | Box Qty |
|--------------|---------|------------|---------|---------|
| AFAV6M-UF7 | 6mm | 7/16-20 | 10 | |
| AFAV8M-UF7 | 8mm | 7/16-20 | 10 | |
| AFAV10M-UF7 | 10mm | 7/16-20 | 10 | |
| AFAV10M-UF10 | 10mm | 5/8-18 | 10 | |

Offset Connector



| Part Number | Tube OD | Tube OD | Bag Qty | Box Qty |
|-------------|---------|---------|---------|---------|
| AOC106M | 10mm | 6mm | 10 | |
| AOC128M | 12mm | 8mm | 10 | |

Bulkhead Union



| Part Number | Tube OD | Tube OD | Bag Qty | Box Qty |
|-------------|---------|---------|---------|---------|
| ABU44M | 4mm | 4mm | 10 | 300 |
| ABU88MM | 5mm | 5mm | 10 | |
| ABU64M | 6mm | 4mm | 10 | 250 |
| ABU66M | 6mm | 6mm | 10 | 250 |
| ABU106M | 6mm | 10mm | 10 | |
| ABU86M | 8mm | 6mm | 5 | 150 |
| ABU88M | 8mm | 8mm | 5 | 100 |
| ABU1010M | 10mm | 10mm | 5 | 100 |
| ABU1212M | 12mm | 12mm | 5 | 80 |

Cross

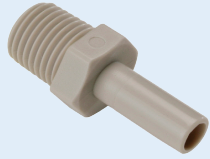


| Part Number | Tube OD | Tube OD | Bag Qty | Box Qty |
|-------------|---------|---------|---------|---------|
| ACR44M | 4mm | 4mm | 10 | |
| ACR66M | 6mm | 6mm | 10 | |
| ACR88M | 8mm | 8mm | 10 | |
| ACR1010M | 10mm | 10mm | 10 | |
| ACR1212M | 12mm | 12mm | 10 | |

NeoFit Fittings Metric Acetal

Add W to end of part number for white, -W for natural white, -E for Black, and -G for gray. Gray pictured below. Example: AMC4M-N1-W

Stem Adapter BSP(P)



| Part Number | Stem OD | Thread BSP(P) | Bag Qty | Box Qty |
|-------------|---------|---------------|---------|---------|
| ASA4M-G1 | 4mm | 1/8" | 10 | 350 |
| ASA4M-G2 | 4mm | 1/4" | 10 | 300 |
| ASA5M-G1 | 5mm | 1/8" | 10 | |
| ASA5M-G2 | 5mm | 1/4" | 10 | |
| ASA6M-G1 | 6mm | 1/8" | 10 | 300 |
| ASA6M-G2 | 6mm | 1/4" | 10 | 300 |
| ASA8M-G1 | 8mm | 1/8" | 10 | 400 |
| ASA8M-G2 | 8mm | 1/4" | 10 | 300 |
| ASA8M-G3 | 8mm | 3/8" | 10 | 250 |
| ASA10M-G2 | 10mm | 1/4" | 10 | 300 |
| ASA10M-G3 | 10mm | 3/8" | 10 | 250 |
| ASA10M-G4 | 10mm | 1/2" | 5 | 130 |
| ASA12M-G3 | 12mm | 3/8" | 10 | 200 |
| ASA12M-G4 | 12mm | 1/2" | 5 | 130 |
| ASA15M-G3 | 15mm | 3/8" | 5 | 150 |
| ASA15M-G4 | 15mm | 1/2" | 5 | 100 |
| ASA22M-G4 | 22mm | 1/2" | 20 | 100 |

Stem Adapter BSPT



| Part Number | Stem OD | Thread BSPT | Bag Qty | Box Qty |
|-------------|---------|-------------|---------|---------|
| ASA4M-R1 | 4mm | 1/8" | 10 | 550 |
| ASA4M-R2 | 4mm | 1/4" | 10 | 400 |
| ASA5M-R1 | 5mm | 1/8" | 10 | |
| ASA5M-R2 | 5mm | 1/4" | 10 | |
| ASA6M-R1 | 6mm | 1/8" | 10 | 450 |
| ASA6M-R2 | 6mm | 1/4" | 10 | 350 |
| ASA8M-R1 | 8mm | 1/8" | 10 | 550 |
| ASA8M-R2 | 8mm | 1/4" | 10 | 400 |
| ASA8M-R3 | 8mm | 3/8" | 10 | 300 |
| ASA10M-R2 | 10mm | 1/4" | 10 | 350 |
| ASA10M-R3 | 10mm | 3/8" | 10 | 250 |
| ASA10M-R4 | 10mm | 1/2" | 5 | 150 |
| ASA12M-R3 | 12mm | 3/8" | 10 | 250 |
| ASA12M-R4 | 12mm | 1/2" | 5 | 125 |

Three Way Divider



| Part Number | Tube OD | Tube OD | Bag Qty | Box Qty |
|-------------|---------|---------|---------|---------|
| ATHWD106M | 10mm | 6mm | 10 | |
| ATHWD1210M | 12mm | 10mm | 10 | |

Tee Union



| Part Number | Tube OD | Tube OD | Bag Qty | Box Qty |
|-------------|---------|---------|---------|---------|
| ATU444M | 4mm | 4mm | 10 | |
| ATU555M | 5mm | 5mm | 10 | |
| ATU666M | 6mm | 6mm | 10 | |
| ATU888M | 8mm | 8mm | 10 | |
| ATU10610M | 10mm | 6mm | 10 | |
| ATU101010M | 10mm | 10mm | 10 | |
| ATU121210M | 12mm | 10mm | 5 | 80 |
| ATU121012M | 12mm | 10mm | 10 | |
| ATU121212M | 12mm | 12mm | 5 | 80 |
| ATU151515M | 15mm | 15mm | 5 | 45 |
| ATU222222M | 22mm | 22mm | 5 | 20 |
| ATU221222M | 22mm | 22mm | 5 | 30 |

Stackable Tee



| Part Number | Tube OD | Stem OD | Bag Qty | Box Qty |
|-------------|---------|---------|---------|---------|
| ATRU444M | 4mm | 4mm | 10 | 400 |
| ATRU666M | 6mm | 6mm | 10 | 300 |
| ATRU888M | 8mm | 8mm | 10 | 220 |

U Bend



| Part Number | Tube OD | Tube OD | Bag Qty | Box Qty |
|-------------|---------|---------|---------|---------|
| AUB66M | 6mm | 6mm | 10 | |
| AUB88M | 8mm | 8mm | 10 | |
| AUB1010M | 10mm | 10mm | 10 | |
| AUB1212M | 12mm | 12mm | 10 | |

NeoFit Fittings Metric Acetal

Add W to end of part number for white, -W for natural white, -E for Black, and -G for gray. Gray pictured below. Example: AMC4M-N1-W

Stem Barb Connector



| Part Number | Stem OD | Barb ID | Bag Qty | Box Qty |
|-------------|---------|---------|---------|---------|
| ATBC64M | 6mm | 4mm | 10 | 800 |
| ATBC66M | 6mm | 6mm | 10 | 700 |
| ATBC88M | 8mm | 6mm | 10 | |
| ATBC106M | 10mm | 6mm | 10 | 500 |
| ATBC108M | 10mm | 8mm | 10 | 450 |
| ATBC1010M | 10mm | 10mm | 10 | 450 |
| ATBC1210M | 12mm | 10mm | 10 | 300 |

Two Way Divider Divider



| Part Number | Tube OD | Tube OD | Bag Qty | Box Qty |
|-------------|---------|---------|---------|---------|
| ATWD44M | 4mm | 4mm | 10 | |
| ATWD66M | 6mm | 6mm | 10 | |
| ATWD88M | 8mm | 8mm | 10 | 200 |
| ATWD108M | 10mm | 8mm | 10 | |
| ATWD1010M | 10mm | 10mm | 10 | |
| ATWD1012M | 10mm | 12mm | 10 | |
| ATWD1212M | 12mm | 12mm | 10 | |

Tube End Stop



| Part Number | Tube OD | Bag Qty | Box Qty |
|-------------|---------|---------|---------|
| ATES6M | 6mm | 10 | 400 |
| ATES8M | 8mm | 10 | 400 |
| ATES10M | 10mm | 10 | 300 |
| ATES12M | 12mm | 10 | 250 |

Union Connector



| Part Number | Tube OD | Tube OD | Bag Qty | Box Qty |
|-------------|---------|---------|---------|---------|
| AUC44M | 4mm | 4mm | 10 | |
| AUC55M | 5mm | 5mm | 10 | |
| AUC64M | 6mm | 6mm | 10 | 350 |
| AUC65M | 6mm | 6mm | 10 | 400 |
| AUC66M | 6mm | 6mm | 10 | 350 |
| AUC84M | 8mm | 4mm | 10 | 250 |
| AUC85M | 8mm | 5mm | 10 | |
| AUC86M | 8mm | 6mm | 10 | 300 |
| AUC88M | 8mm | 8mm | 10 | 250 |
| AUC104M | 10mm | 4mm | 10 | |
| AUC105M | 10mm | 5mm | 10 | |
| AUC106M | 10mm | 6mm | 10 | 250 |
| AUC108M | 10mm | 8mm | 10 | 250 |
| AUC1010M | 10mm | 10mm | 10 | 200 |
| AUC128M | 12mm | 8mm | 10 | |
| AUC1210M | 12mm | 10mm | 5 | 100 |
| AUC1212M | 12mm | 12mm | 5 | 100 |
| AUC1515M | 15mm | 15mm | 5 | 80 |
| AUC2222M | 22mm | 22mm | 20 | 40 |

Plug



| Part Number | Tube OD | Bag Qty | Box Qty |
|-------------|---------|---------|---------|
| APL4M | 4mm | 10 | 800 |
| APL5M | 5mm | 10 | |
| APL6M | 6mm | 10 | 600 |
| APL8M | 8mm | 10 | 500 |
| APL10M | 10mm | 10 | 350 |
| APL12M | 12mm | 10 | 300 |
| APL15M | 15mm | 10 | 200 |

Stem Barb Elbow Connector



| Part Number | Stem OD | Barb ID | Bag Qty | Box Qty |
|-------------|---------|---------|---------|---------|
| ATEB106M | 10mm | 6mm | 10 | 400 |
| ATEB108M | 10mm | 8mm | 10 | 400 |

Add W to end of part number for white, -W for natural white, -E for Black, and -G for gray. Gray pictured below. Example: AMC4M-N1-W

neoFIT

Metric Acetal Swivel



The neoFit Acetal Fittings are manufactured with gray, black, or white acetal copolymer material meeting the requirements of FDA and NSF Standards 51 and 61. These fittings are recommended for use with water and food/beverage applications. Swivel fittings allow the tube connection to be oriented in any direction while allowing the threaded end to be tightened to proper torque allowance. Swivel fittings are packaged as two separate pieces and require the user to assemble.

| Max Torque Ratings | | | | | |
|--------------------|------------------|------------------|----------------|----------------|----------------|
| Thread Size | 1/8" | 1/4" | 3/8" | 1/2" | 3/4" |
| Max Torque | 1 ft/lb (1.5 Nm) | 1 ft/lb (1.5 Nm) | 2 ft/lb (3 Nm) | 2 ft/lb (3 Nm) | 3 ft/lb (4 Nm) |

| Pressure Ratings | | | |
|------------------|------------------|------------------|------------------|
| | 1/4" (6mm) | 3/8" (10mm) | 1/2" (22mm) |
| 33°F (0.6°C) | 290 psi (20 bar) | 232 psi (16 bar) | 203 psi (14 bar) |
| 68°F (20°C) | 290 psi (20 bar) | 232 psi (16 bar) | 203 psi (14 bar) |
| 150°F (65.6°C) | 232 psi (16 bar) | 203 psi (14 bar) | 116 psi (8 bar) |

Temperatures and Pressures indicated refers to NSF standard limits. Please contact our technical department for higher temperature and /or pressure application needs.

Male Elbow Swivel
BSPT



| Part Number | Tube OD | Thread BSPT | Bag Qty | Box Qty |
|-------------|---------|-------------|---------|---------|
| AMES4M-R1 | 4mm | 1/8" | 10 | |
| AMES4M-R2 | 4mm | 1/4" | 10 | |
| AMES8M-R1 | 8mm | 1/8" | 10 | |
| AMES8M-R2 | 8mm | 1/4" | 10 | |
| AMES8M-R3 | 8mm | 3/8" | 10 | |

Male Elbow Swivel
BSP(P)



| Part Number | Tube OD | Thread BSP(P) | Bag Qty | Box Qty |
|-------------|---------|---------------|---------|---------|
| AMES4M-G1 | 4mm | 1/8" | 10 | |
| AMES4M-G2 | 4mm | 1/4" | 10 | |
| AMES8M-G1 | 8mm | 1/8" | 10 | |
| AMES8M-G2 | 8mm | 1/4" | 10 | |
| AMES8M-G3 | 8mm | 3/8" | 10 | |

Male Tee Swivel
BSP(P)



| Part Number | Tube OD | Thread BSP(P) | Bag Qty | Box Qty |
|-------------|---------|---------------|---------|---------|
| AMTS4M-G1 | 4mm | 1/8" | 10 | |
| AMTS4M-G2 | 4mm | 1/4" | 10 | |
| AMTS8M-G1 | 8mm | 1/8" | 10 | |
| AMTS8M-G2 | 8mm | 1/4" | 10 | |
| AMTS8M-G3 | 8mm | 3/8" | 10 | |

Male Tee Swivel
BSPT



| Part Number | Tube OD | Thread BSPT | Bag Qty | Box Qty |
|-------------|---------|-------------|---------|---------|
| AMTS4M-R1 | 4mm | 1/8" | 10 | |
| AMTS4M-R2 | 4mm | 1/4" | 10 | |
| AMTS8M-R1 | 8mm | 1/8" | 10 | |
| AMTS8M-R2 | 8mm | 1/4" | 10 | |
| AMTS8M-R3 | 12mm | 3/8" | 10 | |

Add W to end of part number for white, -W for natural white, -E for Black, and -G for gray. Example: AMC4M-N1-W

neofIT

Acetal Valves



The neoFit Acetal Valves are manufactured with gray, black, or white acetal copolymer material meeting the requirements of FDA and NSF Standards 51 and 61. These fittings are recommended for use with water and food/beverage applications.

| Temperature | Pressure |
|----------------|----------|
| 33°F (0.6°C) | 150 psi |
| 68°F (20°C) | 150 psi |
| 150°F (65.6°C) | 100 psi |

Temperatures and Pressures indicated refers to NSF standard limits, Please contact our technical department for higher temperature and /or pressure application needs.

| Max Torque Ratings | | | | | |
|--------------------|------------------|------------------|----------------|----------------|----------------|
| Thread Size | 1/8" | 1/4" | 3/8" | 1/2" | 3/4" |
| Max Torque | 1 ft/lb (1.5 Nm) | 1 ft/lb (1.5 Nm) | 2 ft/lb (3 Nm) | 2 ft/lb (3 Nm) | 3 ft/lb (4 Nm) |

Flow Control Union Connector



| Part Number | Tube OD | Bag Qty | Box Qty |
|-------------|---------|---------|---------|
| ACVU44 | 1/4" | 10 | 20 |
| ACVU66 | 3/8" | 5 | 100 |
| ACVU6M | 6mm | 10 | |
| ACVU10M | 10mm | 10 | |

Flow Control Elbow Union



| Part Number | Tube OD | Bag Qty | Box Qty |
|-------------|---------|---------|---------|
| ACVE44 | 1/4" | 10 | 200 |
| ACVE66 | 3/8" | 5 | 100 |
| ACVE66M | 6mm | 10 | |
| ACVE1010M | 10mm | 10 | |

Flow Control Bulkhead



| Part Number | Tube OD | Bag Qty | Box Qty |
|-------------|---------|---------|---------|
| ABCVU44 | 1/4" | 10 | |
| ABCVU66 | 3/8" | 5 | |
| ABCVU66M | 6mm | 10 | |
| ABCVU1010M | 10mm | 10 | |

Flow Control Elbow Bulkhead



| Part Number | Tube OD | Bag Qty | Box Qty |
|-------------|---------|---------|---------|
| ABCVE44 | 1/4" | 10 | |
| ABCVE66 | 3/8" | 5 | |
| ABCVE66M | 6mm | 10 | |
| ABCVE1010M | 10mm | 10 | |

Hand Valve Female Adapter BSPT



| Part Number | Tube OD | Thread BSPT | Bag Qty | Box Qty |
|-------------|---------|-------------|---------|---------|
| AHVFE6M-R2 | 6mm | 1/4" | 10 | |
| AHVFE10M-R3 | 10mm | 3/8" | 10 | |
| AHVFE10M-R4 | 10mm | 1/2" | 10 | |
| AHVFE12M-R3 | 12mm | 3/8" | 10 | |
| AHVFE12M-R4 | 12mm | 1/2" | 10 | |

Hand Valve Female Adapter NPTF



| Part Number | Tube OD | Thread NPTF | Bag Qty | Box Qty |
|-------------|---------|-------------|---------|---------|
| AHVFE4-N2 | 1/4" | 1/4" | 10 | |
| AHVFE6-N3 | 3/8" | 3/8" | 10 | |
| AHVFE6-N4 | 3/8" | 1/2" | 10 | |
| AHVFE8-N3 | 1/2" | 3/8" | 10 | |
| AHVFE8-N4 | 1/2" | 1/2" | 10 | |

NeoFit Fittings Acetal Valves

Add W to end of part number for white, -W for natural white, -E for Black, and -G for gray. Example: AMC4M-N1-W

Hand Valve Female Straight Connector
NPTF



| Part Number | Tube OD | Thread NPTF | Bag Qty | Box Qty |
|-------------|---------|-------------|---------|---------|
| AHVFU6-N4 | 10mm | 1/2" | 10 | |

Hand Valve Female Straight Connector
BSPT



| Part Number | Tube OD | Thread BSPT | Bag Qty | Box Qty |
|-------------|---------|-------------|---------|---------|
| AHVFU10M-R4 | 10mm | 1/2" | 10 | |

Hand Valve Male Connector
NPTF



| Part Number | Tube OD | Thread NPTF | Bag Qty | Box Qty |
|-------------|---------|-------------|---------|---------|
| AHVMC4-N2 | 1/4" | 1/4" | 10 | |
| AHVMC6-N3 | 3/8" | 3/8" | 10 | |
| AHVMC8-N4 | 1/2" | 1/2" | 10 | |

Hand Valve Male Connector
BPST



| Part Number | Tube OD | Thread BPST | Bag Qty | Box Qty |
|-------------|---------|-------------|---------|---------|
| AHVMC6M-R2 | 6mm | 1/4" | 10 | |
| AHVMC10M-R3 | 10mm | 3/8" | 10 | |
| AHVMC12M-R4 | 12mm | 1/2" | 10 | |

Flow Control Male Elbow
NPTF



| Part Number | Tube OD | Thread NPTF | Bag Qty | Box Qty |
|-------------|---------|-------------|---------|---------|
| ACVMC4-N2 | 1/4" | 1/4" | 10 | |
| ACVMC6-N3 | 3/8" | 3/8" | 10 | |
| ACVMC6M-N2 | 6mm | 1/4" | 10 | |
| ACVMC10M-N3 | 10mm | 3/8" | 10 | |

Flow Control Female Elbow
NPTF



| Part Number | Tube OD | Thread NPTF | Bag Qty | Box Qty |
|-------------|---------|-------------|---------|---------|
| ACVFA4-N2 | 1/4" | 1/4" | 10 | |
| ACVFA6-N3 | 3/8" | 3/8" | 10 | |
| ACVFA6M-N2 | 6mm | 1/4" | 10 | |
| ACVFA10M-N3 | 10mm | 3/8" | 10 | |

Angle Stop Adapter
With 1/2" NPS adapters



| Part Number | Tube OD | Thread Comp. | Bag Qty | Box Qty |
|-------------|---------|--------------|---------|---------|
| ASBVA-0408 | 1/4" | 3/8" | 10 | |
| ASBVA-0408 | 3/8" | 3/8" | 10 | |

Check Valve



| Part Number | Tube OD | Tube OD | Bag Qty | Box Qty |
|-------------|---------|---------|---------|---------|
| ACHV44 | 1/4" | 1/4" | 10 | 250 |
| ACHV45 | 1/4" | 5/16" | 10 | |
| ACHV88M | 5/16" | 5/16" | 10 | |
| ACHV66 | 3/8" | 3/8" | 5 | 125 |
| ACHV88 | 1/2" | 1/2" | 10 | |
| ACHV66M | 6mm | 6mm | 10 | 300 |
| ACHV88M | 8mm | 8mm | 10 | 200 |
| ACHV1010M | 10mm | 10mm | 5 | 125 |
| ACHV1212M | 12mm | 12mm | 5 | 90 |

Hand Valve Union Connector



| Part Number | Tube OD | Tube OD | Bag Qty | Box Qty |
|-------------|---------|---------|---------|---------|
| AHVU44 | 1/4" | 1/4" | 5 | 125 |
| AHVU66 | 3/8" | 3/8" | 5 | 70 |
| AHVU88 | 1/2" | 1/2" | 5 | 60 |
| AHVU66M | 6mm | 6mm | 5 | 125 |
| AHVU88M | 8mm | 8mm | 5 | 100 |
| AHVU1010M | 10mm | 10mm | 5 | 75 |
| AHVU1212M | 12mm | 12mm | 5 | 70 |

neoFIT Inch Polypropylene White



The neoFit Polypropylene Fittings are manufactured white polypropylene material with EPDM O-rings meeting the requirements of FDA and NSF Standards 51 and 61. These fittings are recommended for use with water and food/beverage applications.

| Temperature | Pressure |
|----------------|----------|
| 33°F (0.6°C) | 150 psi |
| 68°F (20°C) | 150 psi |
| 150°F (65.6°C) | 60 psi |

Temperatures and Pressures indicated refers to NSF standard limits. Please contact our technical department for higher temperature and /or pressure application needs.

| Max Torque Ratings | | | | | |
|--------------------|------------------|------------------|----------------|----------------|----------------|
| Thread Size | 1/8" | 1/4" | 3/8" | 1/2" | 3/4" |
| Max Torque | 1 ft/lb (1.5 Nm) | 1 ft/lb (1.5 Nm) | 2 ft/lb (3 Nm) | 2 ft/lb (3 Nm) | 3 ft/lb (4 Nm) |



| Part Number | Tube OD | Thread NPTF | Bag Qty | Box Qty |
|-------------|---------|-------------|---------|---------|
| PMC4-N1-W | 1/4" | 1/8" | 10 | |
| PMC4-N2-W | 1/4" | 1/4" | 10 | |
| PMC6-N2-W | 3/8" | 1/4" | 10 | |
| PMC6-N3-W | 3/8" | 3/8" | 10 | |



| Part Number | Tube OD | Thread NPTF | Bag Qty | Box Qty |
|-------------|---------|-------------|---------|---------|
| PME4-N1-W | 1/4" | 1/8" | 10 | |
| PME4-N2-W | 1/4" | 1/4" | 10 | |
| PME4-N3-W | 1/4" | 3/8" | 10 | |
| PME6-N2-W | 3/8" | 1/4" | 10 | |
| PME6-N3-W | 3/8" | 3/8" | 10 | |



| Part Number | Tube OD | Tube OD | Bag Qty | Box Qty |
|-------------|---------|---------|---------|---------|
| PTU444-W | 1/4" | 1/4" | 10 | |
| PTU666-W | 3/8" | 3/8" | 10 | |
| PTU888-W | 1/2" | 1/2" | 10 | |



| Part Number | Tube OD | Stem OD | Bag Qty | Box Qty |
|-------------|---------|---------|---------|---------|
| PTRU444-W | 1/4" | 1/4" | 10 | |
| PTRU666-W | 3/8" | 3/8" | 10 | |
| PTRU888-W | 1/2" | 1/2" | 10 | |



| Part Number | Tube OD | Tube OD | Bag Qty | Box Qty |
|-------------|---------|---------|---------|---------|
| PEU44-W | 1/4" | 1/4" | 10 | |
| PEU66-W | 3/8" | 3/8" | 10 | |
| PEU88-W | 1/2" | 1/2" | 10 | |



| Part Number | Tube OD | Tube OD | Bag Qty | Box Qty |
|-------------|---------|---------|---------|---------|
| PUC44-W | 1/4" | 1/4" | 10 | |
| PUC88M-W | 5/16" | 5/16" | 10 | |
| PUC66-W | 3/8" | 3/8" | 10 | |
| PUC88-W | 1/2" | 1/2" | 10 | |

NeoFit Fittings

Inch Polypropylene White

Stem Adapter
NPTF



| Part Number | Stem OD | Thread NPTF | Bag Qty |
|-------------|---------|-------------|---------|
| PSA4-N1-W | 1/4" | 1/8" | 10 |
| PSA4-N2-W | 1/4" | 1/4" | 10 |
| PSA8M-N2-W | 5/16" | 1/4" | 10 |
| PSA8M-N3-W | 5/16" | 3/8" | 10 |
| PSA6-N2-W | 3/8" | 1/4" | 10 |
| PSA6-N3-W | 3/8" | 3/8" | 10 |
| PSA8-N3-W | 1/2" | 3/8" | 10 |
| PSA8-N4-W | 1/2" | 1/2" | 10 |

Tube Elbow Union



| Part Number | Stem OD | Thread NPTF | Bag Qty | Box Qty |
|-------------|---------|-------------|---------|---------|
| PTEU44-W | 1/4" | 1/4" | 10 | |
| PTEU88M-W | 5/16" | 5/16" | 10 | |
| PTEU66-W | 3/8" | 3/8" | 10 | |
| PTEU88-W | 1/2" | 1/2" | 10 | |

Reducer



| Part Number | Tube OD | Stem OD | Bag Qty | Box Qty |
|-------------|---------|---------|---------|---------|
| PRD46-W | 1/4" | 3/8" | 10 | |
| PRD68-W | 3/8" | 1/2" | 10 | |

neofit

Polypropylene White Valves



The neoFit Polypropylene Valves are manufactured with white polypropylene material meeting the requirements of FDA and NSF Standards 51 and 61. These valves are recommended for use with water and food/beverage applications.

| Temperature | Pressure |
|----------------|----------|
| 33°F (0.6°C) | 150 psi |
| 68°F (20°C) | 150 psi |
| 150°F (65.6°C) | 60 psi |

Temperatures and Pressures indicated refers to NSF standard limits. Please contact our technical department for higher temperature and /or pressure application needs.

| Max Torque Ratings | | | | | |
|--------------------|------------------|------------------|----------------|----------------|----------------|
| Thread Size | 1/8" | 1/4" | 3/8" | 1/2" | 3/4" |
| Max Torque | 1 ft/lb (1.5 Nm) | 1 ft/lb (1.5 Nm) | 2 ft/lb (3 Nm) | 2 ft/lb (3 Nm) | 3 ft/lb (4 Nm) |



| Part Number | Tube OD | Thread NPTF | Bag Qty | Box Qty |
|-------------|---------|-------------|---------|---------|
| PHVMC4-N2-W | 1/4" | 1/4" | 10 | |
| PHVMC6-N3-W | 3/8" | 3/8" | 10 | |
| PHVMC8-N4-W | 1/2" | 1/2" | 10 | |



| Part Number | Tube OD | Thread BSPT | Bag Qty | Box Qty |
|---------------|---------|-------------|---------|---------|
| PHVMC6M-R2-W | 6mm | 1/4" | 10 | |
| PHVMC10M-R3-W | 10mm | 3/8" | 10 | |
| PHVMC12M-R4-W | 12mm | 1/2" | 10 | |



| Part Number | Tube OD | Thread NPTF | Bag Qty | Box Qty |
|-------------|---------|-------------|---------|---------|
| PHVFE4-N2-W | 1/4" | 1/4" | 10 | |
| PHVFE6-N3-W | 3/8" | 3/8" | 10 | |
| PHVFE6-N4-W | 3/8" | 1/2" | 10 | |
| PHVFE8-N3-W | 1/2" | 3/8" | 10 | |
| PHVFE8-N4-W | 1/2" | 1/2" | 10 | |



| Part Number | Tube OD | Thread BSPT | Bag Qty | Box Qty |
|---------------|---------|-------------|---------|---------|
| PHVFE6M-R2-W | 6mm | 1/4" | 10 | |
| PHVFE10M-R3-W | 10mm | 3/8" | 10 | |
| PHVFE10M-R4-W | 10mm | 1/2" | 10 | |
| PHVFE12M-R3-W | 12mm | 3/8" | 10 | |
| PHVFE12M-R4-W | 12mm | 1/2" | 10 | |



| Part Number | Tube OD | Bag Qty | Box Qty |
|-------------|---------|---------|---------|
| PHVU44-W | 1/4" | 10 | |
| PHVU88M-W | 5/16" | 10 | |
| PHVU66-W | 3/8" | 10 | |
| PHVU88-W | 1/2" | 10 | |
| PHVU66M-W | 6mm | 10 | |
| PHVU88M-W | 8mm | 10 | |
| PHVU1010M-W | 10mm | 10 | |
| PHVU1212M-W | 12mm | 10 | |

Add W to end of part number for white, -W for natural white, -E for Black, and -G for gray. Gray pictured below. Example: AMC4M-N1-W

neofIT

Accessories



The neofIT accessories are manufactured to be used with the neofIT family of fittings. All materials used in the manufacture of these parts are food grade rated. These fittings are recommended for use with water and food/beverage applications.



| Part Number | Tube OD | Tube ID | Bag Qty | Box Qty |
|-------------|---------|---------|---------|---------|
| ATS44 | 1/4" | 0.17 | 10 | |
| ATS8M | 5/16" | 1/4" | 10 | |
| ATS66 | 3/8" | 5/16" | 10 | |
| ATS88 | 1/2" | 3/8" | 10 | |
| ATS6M | 6mm | 4mm | 10 | |
| ATS8M | 8mm | 6mm | 10 | |
| ATS10M | 10mm | 7mm | 10 | |
| ATS12M | 12mm | 9mm | 10 | |



| Part Number | Tube OD | Tube ID | Bag Qty | Box Qty |
|-------------|---------|---------|---------|---------|
| ADSI6 | 3/8" | 5/16" | 10 | |
| ADSI8M | 8mm | 6mm | 10 | |
| ADSI10M | 10mm | 8mm | 10 | |
| ADSI12M | 12mm | 10mm | 10 | |



| Part Number | Tube OD | Bag Qty |
|-------------|---------|---------|
| ACC4 | 1/4" | 10 |
| ACC8M | 5/16" | 10 |
| ACC6 | 3/8" | 10 |
| ACC8 | 1/2" | 10 |
| ACC6M | 6mm | 10 |
| ACC8M | 8mm | 10 |
| ACC10M | 10mm | 10 |
| ACC12M | 12mm | 10 |



| Part Number | Tube OD | Bag Qty | Box Qty |
|-------------|---------|---------|---------|
| ALC4 | 1/4" | 10 | |
| ALC8M | 5/16" | 10 | |
| ALC6 | 3/8" | 10 | |
| ALC8 | 1/2" | 10 | |
| ALC6M | 6mm | 10 | |
| ALC8M | 8mm | 10 | |
| ALC10M | 10mm | 10 | |
| ALC12M | 12mm | 10 | |



| Part Number | Tube OD | Bag Qty | Box Qty |
|-------------|---------|---------|---------|
| AFBC8M | 5/16" | 10 | |
| AFBC6 | 3/8" | 10 | |
| AFBC8M | 8mm | 10 | |
| AFBC10M | 10mm | 10 | |



| Part Number | Tube OD | Bag Qty | Box Qty |
|-------------|---------|---------|---------|
| HCBE-4M | 5/32" | 10 | |
| HCBE-4 | 1/4" | 10 | |
| HCBE-8M | 5/16" | 10 | |
| HCBE-6 | 3/8" | 10 | |
| HCBE-4M | 1/2" | 10 | |

NeoFit Fittings Accessories

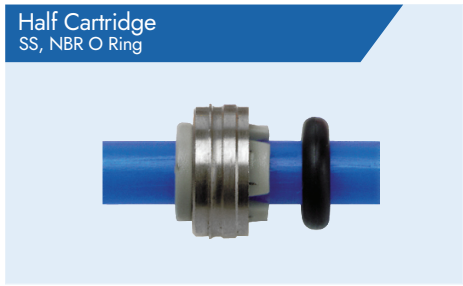
Add W to end of part number for white, -W for natural white, -E for Black, and -G for gray. Gray pictured below. Example: AMC4M-N1-W



| Part Number | Tube OD | Bag Qty | Box Qty |
|-------------|---------|---------|---------|
| HCBE-4M | 4mm | 10 | |
| HCBE-6M | 6mm | 10 | |
| HCBE-8M | 8mm | 10 | |
| HCBE-10M | 10mm | 10 | |
| HCBE-12M | 12mm | 10 | |



| Part Number | Tube OD | Bag Qty | Box Qty |
|-------------|---------|---------|---------|
| HCSB-4M | 5/32" | 10 | |
| HCSB-4 | 1/4" | 10 | |
| HCSB-8M | 5/16" | 10 | |
| HCSB-6 | 3/8" | 10 | |
| HCSB-8 | 1/2" | 10 | |



| Part Number | Tube OD | Bag Qty | Box Qty |
|-------------|---------|---------|---------|
| HCSB-4M | 4mm | 10 | |
| HCSB-6M | 6mm | 10 | |
| HCSB-8M | 8mm | 10 | |
| HCSB-10M | 10mm | 10 | |
| HCSB-12M | 12mm | 10 | |



| Part Number | Tube OD | Bag Qty | Box Qty |
|-------------|---------|---------|---------|
| HCAE-4M | 5/32" | 10 | |
| HCAE-4 | 1/4" | 10 | |
| HCAE-8M | 5/16" | 10 | |
| HCAE-6 | 3/8" | 10 | |
| HCAE-8 | 1/2" | 10 | |



| Part Number | Tube OD | Bag Qty | Box Qty |
|-------------|---------|---------|---------|
| HCAE-4M | 4mm | 10 | |
| HCAE-6M | 6mm | 10 | |
| HCAE-8M | 8mm | 10 | |
| HCAE-10M | 10mm | 10 | |
| HCAE-12M | 12mm | 10 | |



| Part Number | Tube OD | Bag Qty | Box Qty |
|-------------|---------|---------|---------|
| HCAB-4M | 5/32" | 10 | |
| HCAB-4 | 1/4" | 10 | |
| HCAB-8M | 5/16" | 10 | |
| HCAB-6 | 3/8" | 10 | |
| HCAB-8 | 1/2" | 10 | |



| Part Number | Tube OD | Bag Qty |
|-------------|---------|---------|
| HCAB-4M | 4mm | 10 |
| HCAB-6M | 6mm | 10 |
| HCAE-8M | 8mm | 10 |
| HCAB-10M | 10mm | 10 |
| HCAB-12M | 12mm | 10 |



| Part Number | Tube OD | Mesh | Bag Qty | Box Qty |
|--------------|---------|------|---------|---------|
| AFS44-G-100 | 1/4" | 100 | 20 | 40 |
| AFS44-G-200 | 1/4" | 200 | 20 | 40 |
| AFS88M-G-100 | 5/16" | 100 | 20 | 40 |
| AFS88M-G-200 | 5/16" | 200 | 20 | 40 |
| AFS66-G-100 | 3/8" | 100 | 20 | 40 |
| AFS66-G-200 | 3/8" | 200 | 20 | 40 |
| AFS88-G-100 | 1/2" | 100 | 20 | 40 |
| AFS88-G-200 | 1/2" | 200 | 20 | 40 |



| Part Number | Tube OD | Mesh | Bag Qty | Box Qty |
|----------------|---------|------|---------|---------|
| AFS66M-G-100 | 6mm | 100 | 20 | 40 |
| AFS66M-G-200 | 6mm | 200 | 20 | 40 |
| AFS88M-G-100 | 8mm | 100 | 20 | 40 |
| AFS88M-G-200 | 8mm | 200 | 20 | 40 |
| AFS1010M-G-100 | 10mm | 100 | 20 | 40 |
| AFS1010M-G-200 | 10mm | 200 | 20 | 40 |
| AFS1212M-G-100 | 12mm | 100 | 20 | 40 |
| AFS1212M-G-200 | 12mm | 200 | 20 | 40 |

- Although the compatibility is proved as Excellent or Good, it may not suitable in some purposes of applications.
- Be sure to refer in actual using condition

| Chemical Name Density (%), Temperature (°C) | FITTING | | | | | | TUBE | | | | SEAL | | |
|--|---------|--------|--------|-----|-----|----|----------|-------|------------|----------|------|------|-----|
| | BRASS | SUS304 | SUS316 | POM | PBT | PP | URETHANE | NYLON | POLYOLEFIN | FLUORINE | NBR | EPDM | FKM |
| Caustic soda (10% 20°C) | △ | △ | ○ | ⊙ | △ | ○ | × | ○ | ○ | ⊙ | ○ | ⊙ | ○ |
| Caustic soda (30% 20°C) | - | - | - | ⊙ | × | ○ | × | ○ | ○ | ⊙ | - | - | - |
| Caustic soda (30% 70°C) | - | - | - | ○ | × | △ | × | × | △ | ○ | - | - | - |
| Gasoline | ○ | ○ | ○ | ⊙ | ⊙ | △ | ○ | ⊙ | △ | ⊙ | ⊙ | × | ⊙ |
| Air | ⊙ | ⊙ | ⊙ | ⊙ | ⊙ | ⊙ | ○ | ○ | ○ | ○ | ⊙ | ⊙ | ⊙ |
| Sodium perborate | × | - | ○ | ○ | ○ | ○ | - | ○ | ○ | ⊙ | ○ | ⊙ | ⊙ |
| Sodium peroxide | × | - | ○ | - | - | ○ | - | × | ○ | ⊙ | ○ | ⊙ | ⊙ |
| Hydrogen peroxide (5%,20°C) | × | ○ | ○ | ○ | ○ | ⊙ | ○ | ⊙ | ⊙ | ⊙ | - | - | - |
| Hydrogen peroxide (5%,20°C) | × | ○ | ○ | △ | ○ | ⊙ | △ | △ | ⊙ | ⊙ | - | - | - |
| Hydrogen peroxide 30%,20°C) | × | ○ | ○ | × | ○ | ○ | × | × | ○ | ⊙ | - | - | - |
| Perchloric acid | × | × | × | × | ○ | ○ | × | × | ○ | ○ | - | ○ | ⊙ |
| Grease | ○ | ⊙ | ⊙ | ⊙ | ⊙ | △ | ○ | ⊙ | △ | ⊙ | ⊙ | × | ⊙ |
| Sodium silicate | △ | - | ○ | ⊙ | ○ | ⊙ | ⊙ | ⊙ | ⊙ | ⊙ | ⊙ | ⊙ | ⊙ |
| Glycerin | ○ | ⊙ | ⊙ | ⊙ | ⊙ | ⊙ | ○ | ⊙ | ⊙ | ⊙ | ⊙ | ⊙ | ⊙ |
| Naphtha | △ | ○ | ○ | ⊙ | ○ | △ | △ | ○ | △ | ⊙ | △ | × | ⊙ |
| Naphthaline | △ | - | △ | ⊙ | ○ | ○ | △ | ⊙ | △ | ⊙ | × | × | ⊙ |
| Nitropropane | - | - | - | ○ | - | ○ | - | - | ○ | ○ | - | - | - |
| Kerosene | ⊙ | ⊙ | ⊙ | ⊙ | ⊙ | △ | ⊙ | ⊙ | △ | ⊙ | ⊙ | × | ⊙ |
| Dichloro benzene | △ | - | - | △ | △ | △ | × | △ | × | ⊙ | - | - | - |
| Linoleic acid | - | - | - | ○ | - | △ | - | △ | △ | ○ | ○ | × | ○ |
| Maleic acid | - | △ | △ | - | - | ⊙ | △ | ⊙ | ⊙ | ⊙ | - | △ | ⊙ |
| Cottonseed oil | △ | ○ | ○ | ⊙ | - | ○ | ⊙ | ⊙ | ○ | ⊙ | ⊙ | ⊙ | ⊙ |
| Methane | ○ | - | △ | ⊙ | ⊙ | ⊙ | ⊙ | ⊙ | ⊙ | ⊙ | ⊙ | × | ⊙ |
| Methyl alcohol(Methanol) | ⊙ | △ | ○ | ○ | ○ | ○ | △ | ○ | ○ | ⊙ | ⊙ | ⊙ | △ |
| Methyl ethyl ketone(MEK) | ⊙ | △ | ○ | ○ | ○ | ○ | × | ○ | ○ | ○ | × | ⊙ | × |
| Methyl isobutyl ketone(MIBK) | △ | - | △ | ○ | ○ | ○ | × | ○ | ○ | ⊙ | × | △ | × |
| Monoethanolamine | - | - | △ | ○ | - | ○ | - | ○ | △ | ○ | × | ○ | × |
| Monochlorobenzene | - | - | - | ○ | - | × | × | × | × | ○ | × | × | ⊙ |
| Chloroacetic acid | - | - | - | △ | △ | × | × | × | × | ○ | - | - | - |
| Hydrofluoric acid Anhydride | × | - | × | × | - | × | × | × | × | ○ | - | ○ | - |
| Acetic Anhydride | × | ○ | ○ | × | - | △ | × | × | △ | ○ | △ | ○ | × |
| Water (24°C) | ○ | ○ | ○ | ⊙ | ○ | ⊙ | ⊙ | ⊙ | ⊙ | ⊙ | ⊙ | ⊙ | ⊙ |
| Water (100°C) | × | ○ | ○ | △ | × | △ | △ | △ | △ | ⊙ | - | - | - |
| Sea Water | △ | ○ | ○ | ⊙ | ○ | ⊙ | ⊙ | ⊙ | ⊙ | ⊙ | - | - | - |
| Bunker oil | △ | - | ○ | - | - | ○ | - | ○ | ○ | - | ⊙ | - | ⊙ |
| Benzene(Benzol) | × | △ | △ | ○ | ○ | △ | × | ○ | × | ⊙ | × | × | ⊙ |
| Butane | ⊙ | ⊙ | ⊙ | ⊙ | ⊙ | ⊙ | - | ○ | △ | ⊙ | ⊙ | × | ⊙ |
| Fluorine | × | × | △ | × | - | × | × | - | × | × | - | △ | ○ |
| Borax | × | - | ○ | - | - | ⊙ | ⊙ | ⊙ | ⊙ | ⊙ | ○ | ⊙ | ⊙ |
| Boric acid | ○ | ○ | ○ | ○ | ○ | ⊙ | ⊙ | ⊙ | ⊙ | ⊙ | ⊙ | ⊙ | ⊙ |
| Amyl borate | - | - | - | ○ | - | △ | - | - | △ | ○ | ⊙ | × | ⊙ |
| Bromine | × | - | × | × | × | △ | × | × | × | ⊙ | - | - | ⊙ |
| Arsenic acid | △ | ○ | ○ | - | - | ○ | - | △ | ○ | ○ | - | - | - |
| Carbon tetrachloride | △ | △ | △ | ○ | ○ | △ | × | △ | × | ⊙ | △ | × | ⊙ |
| Oxygen | ⊙ | ⊙ | ⊙ | ○ | ○ | ○ | ○ | ○ | ○ | ⊙ | ○ | ⊙ | ⊙ |
| Petroleum | - | - | - | ○ | ○ | × | ⊙ | ⊙ | × | ⊙ | ⊙ | × | ⊙ |

| | |
|---------------------------|---|
| Judgement Standard | ⊙ : Excellent ○ : Good △ : Required confirmation × : Incompatible - : No data |
|---------------------------|---|

| Chemical Name Density (%), Temperature (°C) | FITTING | | | | | | TUBE | | | | SEAL | | |
|--|---------|--------|--------|-----|-----|----|----------|-------|------------|----------|------|------|-----|
| | BRASS | SUS304 | SUS316 | POM | PBT | PP | URETHANE | NYLON | POLYOLEFIN | FLUORINE | NBR | EPDM | FKM |
| Salt Water | × | △ | △ | ⊙ | ○ | ○ | - | ○ | ○ | ○ | - | - | - |
| Soda water | - | - | - | ⊙ | ○ | ○ | ○ | ○ | ○ | ○ | - | - | - |
| Soda ash Sodium carbonate | ○ | △ | △ | ⊙ | ○ | ⊙ | ⊙ | ⊙ | ⊙ | ⊙ | ⊙ | ⊙ | ⊙ |
| Pine oil | △ | ○ | ⊙ | - | ○ | ○ | - | × | ○ | ○ | ○ | × | ⊙ |
| Oxalic acid | △ | △ | △ | × | ○ | ⊙ | △ | ⊙ | ⊙ | ⊙ | ○ | ⊙ | ⊙ |
| Ethyl oxalate | - | - | - | ○ | ○ | × | × | ○ | × | ○ | × | ⊙ | ⊙ |
| Magnesium hydroxide | △ | - | △ | ⊙ | × | ○ | △ | ⊙ | ⊙ | ⊙ | ○ | ⊙ | ⊙ |
| Barium hydroxide | × | - | ⊙ | ⊙ | △ | ○ | - | ○ | ○ | ⊙ | ⊙ | ⊙ | ⊙ |
| Ammonium hydroxide | × | △ | ○ | ⊙ | × | ⊙ | △ | ○ | ⊙ | ⊙ | × | ⊙ | ○ |
| Potassium hydroxide | △ | △ | △ | ⊙ | × | ○ | △ | △ | ⊙ | ⊙ | ○ | ⊙ | ○ |
| Calcium hydroxide | △ | △ | △ | ⊙ | × | ○ | △ | ⊙ | ⊙ | ⊙ | ⊙ | ⊙ | ⊙ |
| Hydrogen | △ | ⊙ | ⊙ | ⊙ | ⊙ | ⊙ | ⊙ | ⊙ | ⊙ | ⊙ | ⊙ | ⊙ | ⊙ |
| Mercury | × | - | △ | - | - | ⊙ | - | ○ | ○ | ○ | ⊙ | ⊙ | ⊙ |
| Steam (150) | ○ | - | ○ | △ | △ | × | × | × | × | ○ | × | ⊙ | × |
| Steam (150) | - | - | - | × | × | △ | × | × | × | ○ | × | ○ | × |
| Vegetable oil | - | - | - | ○ | ○ | ○ | - | ○ | ○ | ○ | ⊙ | ⊙ | ⊙ |
| Salt water | △ | △ | △ | ⊙ | ○ | ⊙ | ○ | ⊙ | ⊙ | ⊙ | - | - | - |
| Silicone greases | - | - | - | ⊙ | ⊙ | △ | - | ○ | △ | ○ | ⊙ | ⊙ | ⊙ |
| Silicone oil | - | - | - | ⊙ | ⊙ | △ | - | ○ | △ | ○ | ⊙ | ⊙ | ⊙ |
| Glue | △ | - | △ | - | - | ⊙ | - | ○ | ○ | ⊙ | - | - | - |
| Aniline | × | △ | △ | ○ | ○ | △ | × | × | × | ○ | × | ○ | △ |
| Amyl naphthalene | - | - | - | ⊙ | ⊙ | △ | - | - | △ | ○ | × | × | ⊙ |
| Amyl alcohol | ○ | △ | △ | ⊙ | ⊙ | ○ | ○ | ○ | ○ | ○ | ○ | ⊙ | ○ |
| Acetone | ⊙ | △ | ○ | ○ | ○ | △ | × | ○ | △ | ○ | × | ⊙ | × |
| Acetamide | - | - | - | ○ | ○ | △ | - | - | △ | ○ | ⊙ | ⊙ | ○ |
| Acetaldehyde | ⊙ | ○ | ⊙ | ○ | ○ | ○ | ○ | ○ | △ | ○ | × | ⊙ | × |
| Acetylene | × | ○ | ⊙ | ○ | ⊙ | ⊙ | ⊙ | ⊙ | ⊙ | ⊙ | ○ | ⊙ | ⊙ |
| Sulfurous acid | × | △ | △ | × | ○ | ○ | × | × | ○ | ⊙ | ○ | ○ | ⊙ |
| Sulfurous acid gas | - | - | ○ | △ | ○ | ○ | × | × | △ | ⊙ | ○ | ○ | ⊙ |
| Sodium sulfite | ○ | ○ | ⊙ | ⊙ | ○ | ○ | - | △ | ○ | ⊙ | - | - | - |
| Ammonia | △ | ⊙ | ⊙ | ○ | △ | ○ | - | ○ | ○ | ⊙ | ⊙ | ⊙ | × |
| Ammonia gas | × | ○ | ○ | ○ | △ | △ | × | △ | △ | ○ | ⊙ | ⊙ | × |
| Ammonia gas | × | ○ | ○ | ○ | × | × | × | × | × | ○ | ⊙ | ⊙ | × |
| Liquid Ammonia | ○ | ⊙ | ⊙ | ○ | △ | ○ | - | ○ | ○ | ○ | - | - | - |
| Chlorine Liquide | - | - | - | × | ○ | × | × | × | × | ○ | - | - | - |
| Liquefied petroleum gas(LPG) | ⊙ | ⊙ | ⊙ | ⊙ | ⊙ | △ | - | ○ | △ | ○ | ⊙ | × | ⊙ |
| Ethanolamine | - | - | - | ⊙ | △ | △ | - | △ | △ | ○ | ○ | ○ | × |
| Ethylene glyco | △ | △ | △ | ⊙ | ○ | ⊙ | ⊙ | ⊙ | ⊙ | ⊙ | ⊙ | ⊙ | ⊙ |
| Ethyl cellulose | - | - | △ | ⊙ | ⊙ | ⊙ | - | - | ○ | ⊙ | - | ○ | × |
| Ethyl alcohol(Ethanol) | ⊙ | ○ | ⊙ | ⊙ | ⊙ | ○ | △ | ○ | ○ | ⊙ | ⊙ | ⊙ | ⊙ |
| Lye solution | - | - | - | ⊙ | ○ | ○ | - | ○ | ○ | ○ | ○ | ⊙ | ○ |
| Hydrochloric acid(10%, 20°C) | × | × | × | × | ○ | ⊙ | △ | ○ | ⊙ | ⊙ | - | - | - |
| Hydrochloric acid(20%, 20°C) | × | × | × | × | △ | ○ | × | × | ○ | ⊙ | - | - | - |
| Hydrochloric acid(20%, 80°C) | × | × | × | × | × | × | × | × | × | ○ | × | △ | ⊙ |
| Hydrochloric acid(38%, 20°C) | × | × | × | × | △ | ○ | × | × | ○ | ⊙ | ○ | ⊙ | ⊙ |
| Magnesium chloride | △ | △ | ○ | ⊙ | ○ | ⊙ | ⊙ | ⊙ | ⊙ | ⊙ | ⊙ | ⊙ | ⊙ |

| | |
|---------------------------|---|
| Judgement Standard | ⊙ : Excellent ○ : Good △ : Required confirmation × : Incompatible – : No data |
|---------------------------|---|

| Chemical Name Density (%), Temperature (°C) | FITTING | | | | | | TUBE | | | | SEAL | | |
|--|---------|--------|--------|-----|-----|----|----------|-------|------------|----------|------|------|-----|
| | BRASS | SUS304 | SUS316 | POM | PBT | PP | URETHANE | NYLON | POLYOLEFIN | FLUORINE | NBR | EPDM | FKM |
| Methyle chloride | ○ | ○ | ⊙ | ⊙ | – | × | × | △ | × | ○ | × | △ | ⊙ |
| Barium chloride | × | – | ○ | – | ○ | ⊙ | ⊙ | ⊙ | ⊙ | ⊙ | ⊙ | ⊙ | ⊙ |
| Zinc chloride | × | △ | ○ | × | ○ | ⊙ | ⊙ | ○ | ⊙ | ⊙ | ⊙ | ⊙ | ⊙ |
| Acetyl chloride | – | – | △ | × | – | × | × | × | × | – | – | – | ⊙ |
| Aluminium chloride | × | × | × | – | ○ | ⊙ | – | △ | ○ | ⊙ | ⊙ | ⊙ | ⊙ |
| Ammonium chloride | × | △ | △ | ⊙ | ○ | ⊙ | ○ | ⊙ | ⊙ | ⊙ | ⊙ | ⊙ | ⊙ |
| Ethyle chloride | ○ | ⊙ | ⊙ | ⊙ | – | × | × | ⊙ | × | – | ⊙ | ⊙ | ⊙ |
| Sulfur chloride | × | – | △ | – | – | △ | – | – | △ | ⊙ | △ | × | ⊙ |
| Kalium chloride | △ | △ | ○ | ⊙ | ○ | ⊙ | ○ | ⊙ | ⊙ | ⊙ | ⊙ | ⊙ | ⊙ |
| Calcium chloride | ○ | △ | △ | ⊙ | ○ | ⊙ | ○ | ⊙ | ⊙ | ⊙ | ⊙ | ⊙ | ⊙ |
| Ozone | ○ | ○ | ○ | △ | ⊙ | △ | △ | ○ | △ | ⊙ | ○ | ⊙ | ⊙ |
| Oleic acid | △ | △ | △ | △ | ⊙ | ○ | △ | ○ | △ | ⊙ | △ | ○ | ○ |
| Olive oil | △ | ⊙ | ⊙ | ○ | ⊙ | ○ | ○ | ○ | ○ | ⊙ | ⊙ | ○ | ⊙ |
| Uric acid | – | – | – | ○ | ○ | – | × | ○ | – | ○ | – | – | – |
| Aqua acid | – | – | – | × | – | △ | × | × | × | ○ | – | △ | ○ |
| Lactic acid | × | △ | △ | ○ | ○ | ⊙ | – | ○ | ○ | ⊙ | ⊙ | ⊙ | ⊙ |
| Sulfur | × | ○ | ○ | ⊙ | – | ⊙ | △ | ○ | ⊙ | ⊙ | × | ⊙ | ⊙ |
| Lubricating oil(Pertroleum base) | ⊙ | ⊙ | ⊙ | ⊙ | ⊙ | × | ⊙ | ⊙ | × | ⊙ | ⊙ | × | ⊙ |
| Lubricating oil(Easter base) | ⊙ | ⊙ | ⊙ | ⊙ | ○ | × | × | ○ | × | ○ | – | – | – |
| Isocotane | ⊙ | ○ | ○ | ⊙ | ⊙ | × | △ | ○ | × | ○ | ⊙ | × | ⊙ |
| Isopropyl alcohol | ○ | ○ | ○ | ⊙ | ○ | ⊙ | – | △ | ⊙ | ⊙ | ○ | ⊙ | ⊙ |
| Isopropyl ether | ⊙ | ○ | ○ | ⊙ | ○ | ○ | – | △ | △ | ○ | ○ | × | × |
| Carbon disulfide | ○ | ○ | ○ | ○ | – | × | × | ○ | × | ○ | △ | × | ⊙ |
| Phenyle disulfide | – | – | – | – | – | – | △ | ○ | – | ○ | – | – | – |
| Carbon monoxide | ⊙ | ⊙ | ⊙ | ⊙ | ○ | ⊙ | ⊙ | ⊙ | ⊙ | ⊙ | ⊙ | ⊙ | ⊙ |
| Gelatin | ⊙ | ⊙ | ⊙ | ⊙ | ○ | ○ | ○ | ○ | ○ | ○ | ⊙ | ⊙ | ⊙ |
| Heavy water | – | – | – | ⊙ | ○ | ⊙ | ⊙ | ⊙ | ⊙ | ⊙ | – | – | – |
| Soap souldions | ⊙ | ⊙ | ⊙ | ⊙ | ○ | ○ | ○ | ⊙ | △ | ⊙ | ⊙ | ⊙ | ⊙ |
| Sodium nitrate | ○ | ○ | ⊙ | ○ | ○ | ⊙ | ○ | ⊙ | ⊙ | ⊙ | ○ | ⊙ | – |
| Aluminium nitric | – | – | △ | ○ | ○ | ○ | △ | ○ | ○ | ⊙ | ⊙ | ⊙ | – |
| Ammonium nitric | × | ○ | ○ | ○ | ○ | ⊙ | ○ | ⊙ | ⊙ | ⊙ | ⊙ | ⊙ | – |
| Kalium nitric | △ | △ | △ | ○ | ○ | ⊙ | ⊙ | ○ | ⊙ | ⊙ | ⊙ | ⊙ | ⊙ |
| Calcium nitri | – | – | – | ○ | ○ | ⊙ | – | ○ | ○ | ⊙ | ⊙ | ⊙ | ⊙ |
| Nitrogen | ○ | ⊙ | ⊙ | ⊙ | ○ | ⊙ | ○ | ○ | ○ | ⊙ | ⊙ | ⊙ | ⊙ |
| Natural gas | ⊙ | ⊙ | ⊙ | ⊙ | ⊙ | ○ | – | ○ | ○ | ○ | ⊙ | × | ⊙ |
| Acetic acid(10%, 20°C) | × | ○ | ⊙ | △ | ○ | ⊙ | × | △ | ⊙ | ⊙ | ○ | ⊙ | ○ |
| Acetic acid(50%, 20°C) | × | ○ | ○ | × | ○ | ○ | × | × | ○ | ○ | – | – | – |
| Acetic acid(50%, 70°C) | × | ○ | ○ | × | △ | × | × | × | × | ○ | – | – | – |
| Acetic acid(100%, 20°C) | × | △ | △ | × | △ | × | × | × | × | ○ | – | – | – |
| Lead acetate | – | △ | – | – | ○ | ○ | – | ○ | ○ | ○ | ○ | ⊙ | – |
| Nickel acetate | – | – | △ | – | ○ | ⊙ | – | ○ | ○ | ⊙ | ○ | ⊙ | × |
| Zinc acetate | – | – | – | ○ | ○ | ○ | – | ○ | ○ | ○ | ○ | ⊙ | × |
| Aluminium acetate | – | – | – | ○ | ○ | ○ | – | ○ | ○ | ○ | ○ | ⊙ | – |
| Calcium acetate | △ | – | △ | ○ | ○ | ⊙ | ○ | ○ | ○ | ⊙ | ○ | ⊙ | × |
| Cresol | ○ | △ | ⊙ | △ | ○ | ○ | × | × | △ | ⊙ | △ | × | ⊙ |
| Chlorosulfonic acid | △ | × | × | × | ○ | × | – | × | × | ○ | × | × | △ |

Chemical compatibility table

| | |
|---------------------------|---|
| Judgement Standard | ⊙ : Excellent ○ : Good △ : Required confirmation × : Incompatible - : No data |
|---------------------------|---|

| Chemical Name Density (%), Temperature (°C) | FITTING | | | | | | TUBE | | | | SEAL | | |
|--|---------|--------|--------|-----|-----|----|----------|-------|------------|----------|------|------|-----|
| | BRASS | SUS304 | SUS316 | POM | PBT | PP | URETHANE | NYLON | POLYOLEFIN | FLUORINE | NBR | EPDM | FKM |
| Chloroacetone | - | - | - | - | - | × | - | - | × | - | × | ⊙ | × |
| Chlorotoluene | - | - | - | ○ | ○ | × | - | × | × | ○ | × | × | ⊙ |
| Chloroform | ○ | ○ | ○ | △ | △ | × | × | ○ | × | ⊙ | × | × | ⊙ |
| Soybean oil | △ | ○ | ○ | ⊙ | ⊙ | ○ | - | ○ | ○ | ⊙ | ⊙ | △ | ⊙ |
| Tannic acid | × | △ | △ | ○ | - | ⊙ | △ | ⊙ | ⊙ | ⊙ | ⊙ | ⊙ | ⊙ |
| Tar | △ | ⊙ | ⊙ | - | - | ○ | ⊙ | ⊙ | ○ | ⊙ | ○ | × | ⊙ |
| Carbonic acid | ○ | △ | △ | - | - | ○ | △ | ⊙ | ○ | ⊙ | ⊙ | ⊙ | ⊙ |
| Carbon dioxide | ○ | ○ | ○ | ⊙ | ⊙ | ⊙ | ○ | ○ | ○ | ⊙ | - | - | - |
| Sodium carbonate | ○ | △ | △ | ⊙ | ○ | ⊙ | ⊙ | ⊙ | ⊙ | ⊙ | - | - | - |
| Ammonium carbonate | - | △ | △ | ⊙ | ○ | ○ | - | ○ | ○ | ⊙ | × | ⊙ | - |
| Toluene | ⊙ | ⊙ | ⊙ | ○ | △ | △ | △ | ○ | △ | ○ | × | × | ⊙ |
| Triacetin | - | - | - | - | - | ○ | - | - | ○ | - | ○ | ⊙ | × |
| Phenol | ○ | ○ | ○ | × | ○ | ○ | × | × | ○ | ⊙ | - | ○ | ⊙ |
| Glucose | ⊙ | ⊙ | ⊙ | ⊙ | ⊙ | ⊙ | ○ | ⊙ | ⊙ | ⊙ | ⊙ | ⊙ | ⊙ |
| Freon11 | ⊙ | ⊙ | ⊙ | ⊙ | ⊙ | - | - | ○ | - | ○ | ⊙ | × | ⊙ |
| Freon12 | ⊙ | ⊙ | ⊙ | ⊙ | ⊙ | - | - | ○ | - | ○ | ⊙ | ○ | ○ |
| Freon21 | ⊙ | ⊙ | ⊙ | ⊙ | ⊙ | - | - | ○ | - | ○ | × | × | × |
| Freon22 | ⊙ | ⊙ | ⊙ | ⊙ | ⊙ | - | - | ○ | - | ○ | × | ⊙ | × |
| Freon113 | ⊙ | ⊙ | ⊙ | ⊙ | ⊙ | - | - | ○ | - | ○ | ⊙ | × | ○ |
| Freon114 | ⊙ | ⊙ | ⊙ | ⊙ | ⊙ | - | - | ○ | - | ○ | ⊙ | ⊙ | ○ |
| Propane | ⊙ | ⊙ | ⊙ | ⊙ | ⊙ | ⊙ | ○ | ⊙ | ⊙ | ⊙ | ⊙ | × | ⊙ |
| Propylene | ⊙ | ⊙ | ⊙ | ⊙ | ⊙ | - | - | ○ | - | ○ | × | × | ⊙ |
| Castor oil | ○ | ○ | ○ | ○ | ○ | ⊙ | △ | ⊙ | ⊙ | ⊙ | ⊙ | ○ | ⊙ |
| Hexane | ○ | ○ | ○ | ⊙ | ⊙ | △ | ○ | ⊙ | × | ⊙ | ⊙ | × | ⊙ |
| Sulfuric acid (10%, 20°C) | × | × | × | × | ○ | ○ | × | ○ | ○ | ⊙ | × | ○ | ⊙ |
| Sulfuric acid (10%, 70°C) | × | × | × | × | × | △ | × | × | △ | ⊙ | - | - | - |
| Sulfuric acid (30%, 20°C) | × | × | × | × | △ | ○ | × | × | ○ | ⊙ | - | - | - |
| Sulfuric acid (30%, 70°C) | × | × | × | × | × | △ | × | × | △ | ○ | - | - | - |
| Sulfuric acid (98%, 20°C) | × | × | × | × | × | × | × | × | × | ○ | - | - | - |
| Sulfuric acid (98%, 70°C) | × | × | × | × | × | × | × | × | × | ○ | - | - | - |
| Sodium sulfate | ○ | △ | ○ | ⊙ | ○ | ⊙ | ⊙ | ⊙ | ⊙ | ⊙ | ⊙ | ⊙ | ⊙ |
| Nickel sulfate | - | △ | ○ | - | ○ | ○ | - | ○ | ○ | ⊙ | ⊙ | ⊙ | ⊙ |
| Copper sulfate | ○ | △ | ○ | ⊙ | ○ | ⊙ | ⊙ | ⊙ | ⊙ | ⊙ | ⊙ | ⊙ | ⊙ |
| Magnesium sulfate | ○ | ○ | ⊙ | - | ○ | ⊙ | ⊙ | ⊙ | ⊙ | ⊙ | ⊙ | ⊙ | ⊙ |
| Metyl sulfate | - | - | - | - | ○ | × | × | △ | × | ⊙ | - | - | - |
| Barium sulfate | △ | ○ | ○ | - | ○ | ○ | - | ○ | ○ | ⊙ | ⊙ | ⊙ | ⊙ |
| Aluminium sulfate | × | ○ | ○ | ⊙ | ○ | ⊙ | - | ⊙ | ⊙ | ⊙ | ⊙ | ⊙ | ⊙ |
| Ammonium sulfate | △ | △ | △ | ⊙ | ○ | ⊙ | ⊙ | ⊙ | ⊙ | ⊙ | ⊙ | ⊙ | - |
| Lead sulfate | △ | - | △ | - | ○ | ○ | ○ | ○ | ○ | ⊙ | - | - | - |
| Sodium sulfide | × | △ | △ | ○ | ○ | ○ | ○ | ○ | ○ | ⊙ | ○ | ⊙ | ⊙ |
| Barium sulfide | - | - | ○ | ○ | ○ | ○ | - | ○ | ○ | ⊙ | ⊙ | ⊙ | ⊙ |
| Zinc sulfide | △ | ○ | ○ | ○ | ○ | ⊙ | △ | × | ⊙ | ⊙ | - | - | - |
| Calcium sulfide | - | - | △ | ○ | ○ | ○ | - | ○ | ○ | ⊙ | ○ | ⊙ | ⊙ |
| | | | | | | | | | | | | | |
| | | | | | | | | | | | | | |
| | | | | | | | | | | | | | |