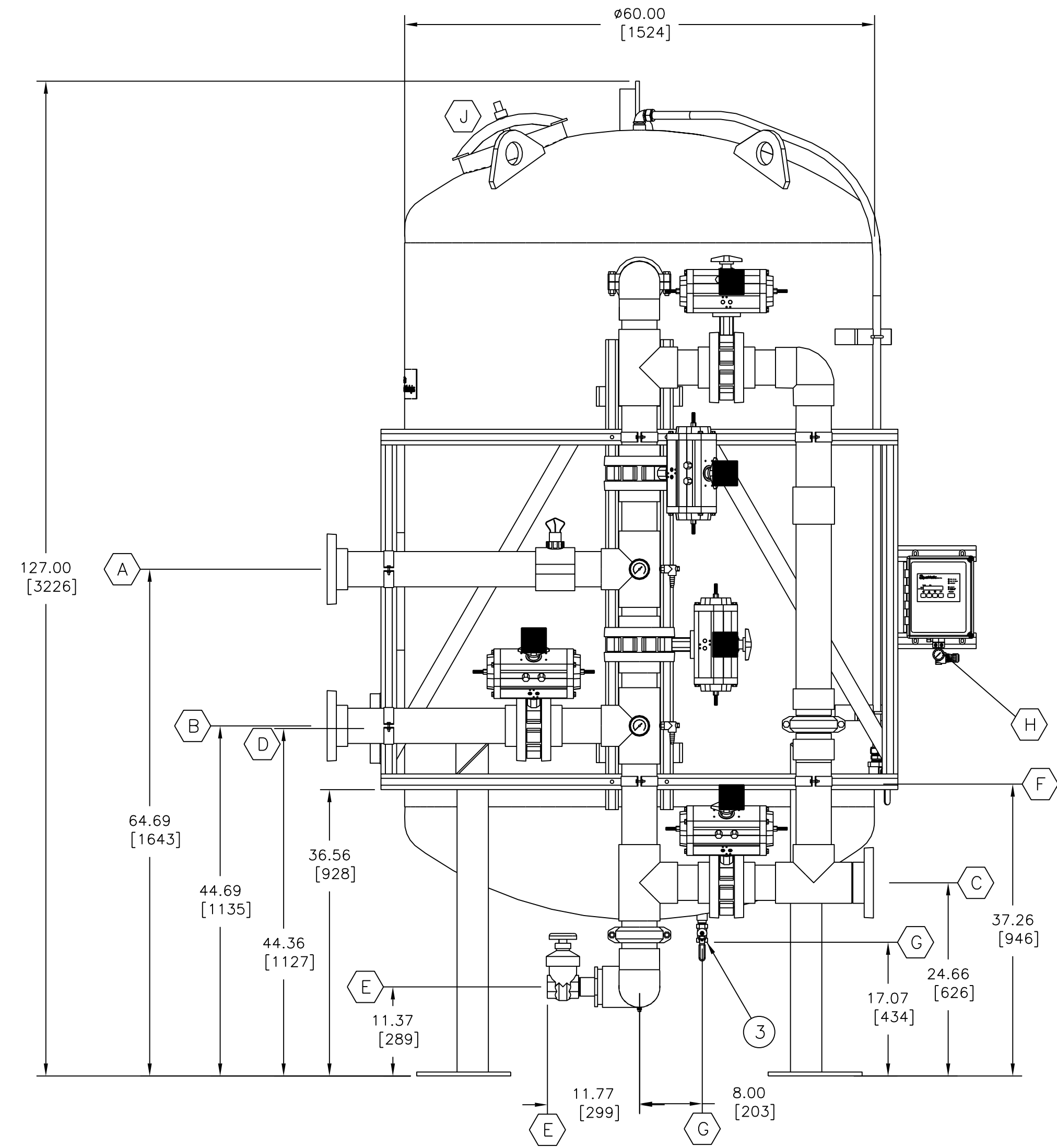
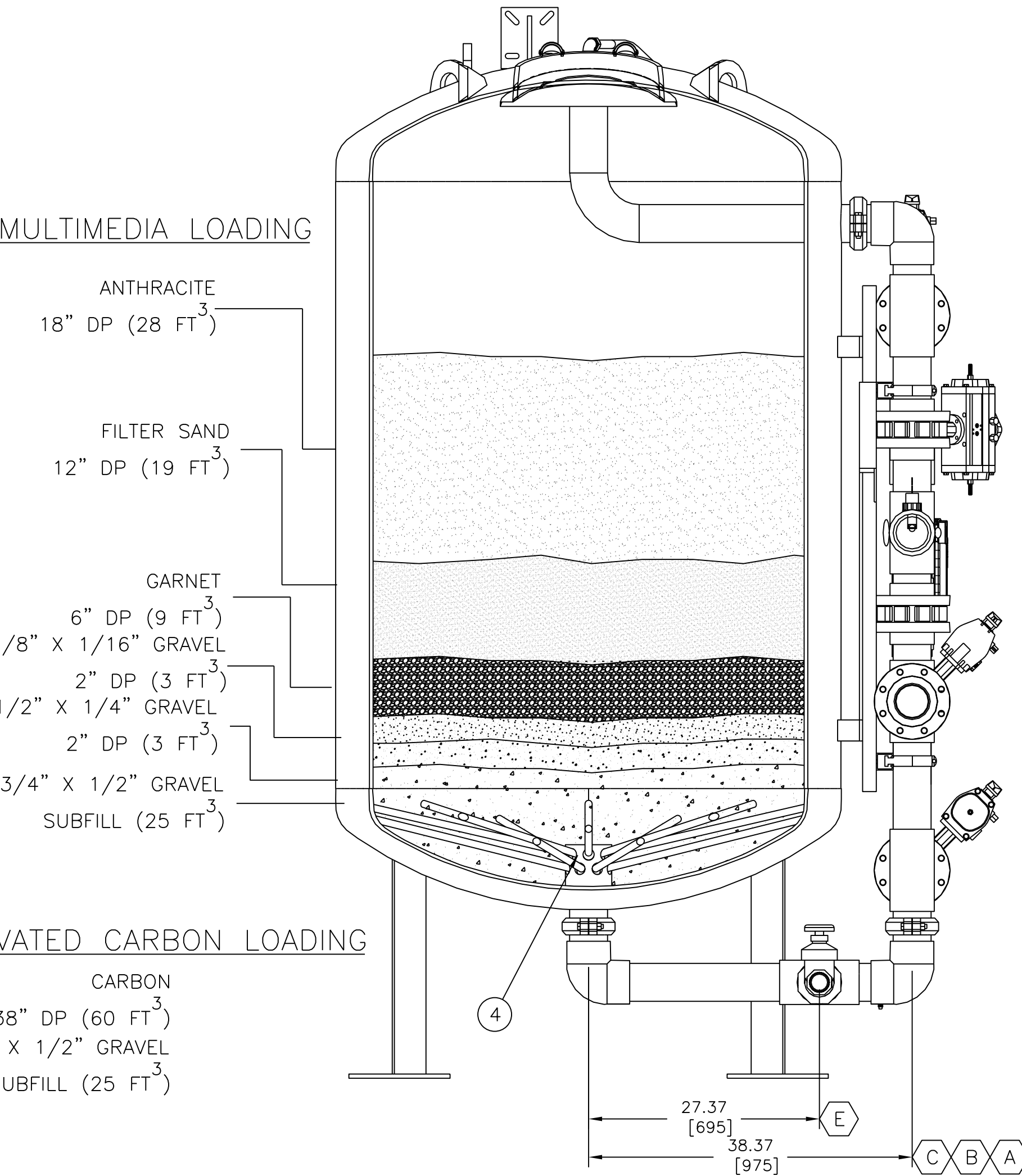
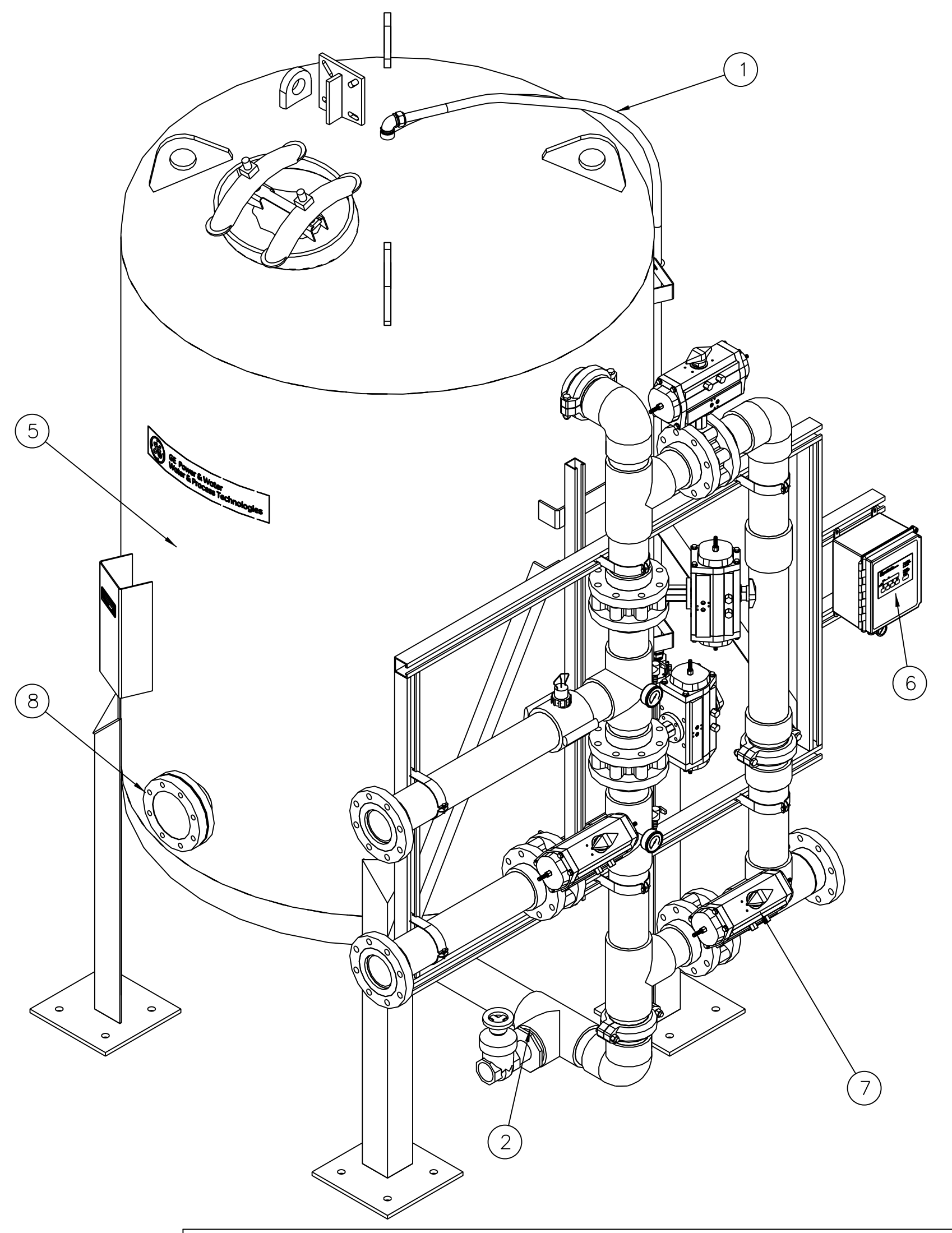
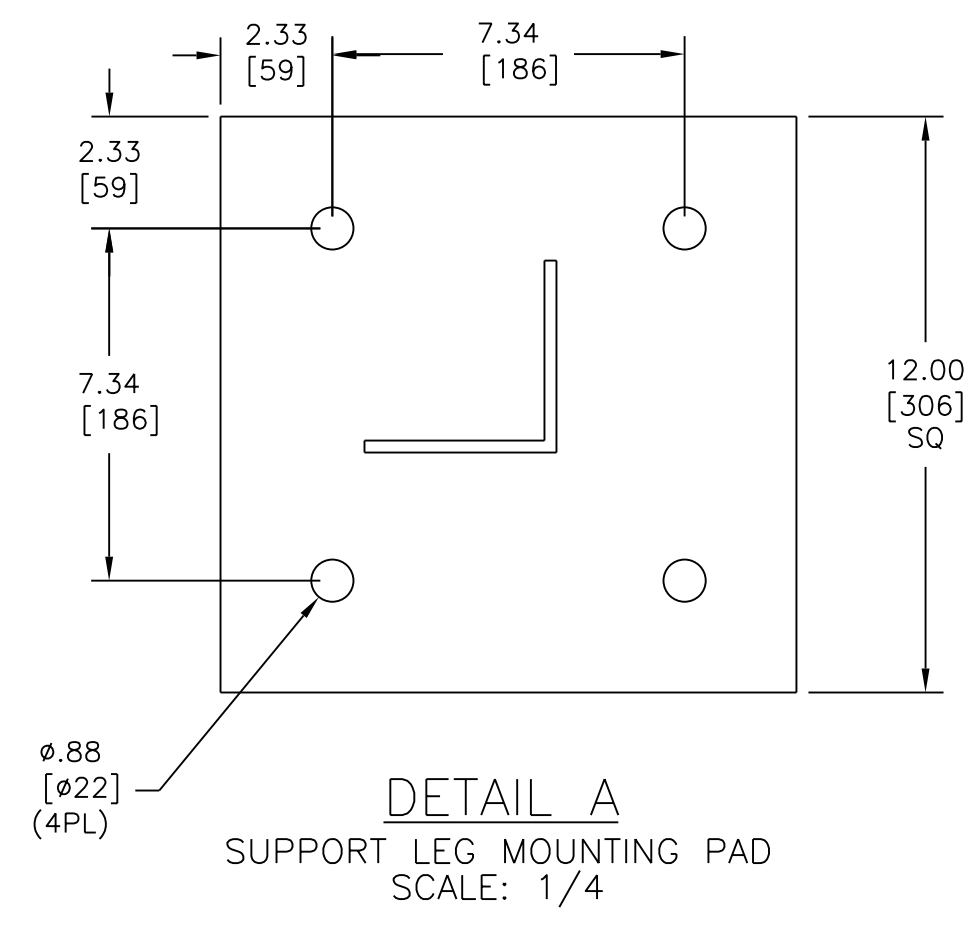


VALVE NUMBER	DESCRIPTION
1	SERVICE INLET VALVE
2	SERVICE OUTLET VALVE
3	BACKWASH INLET VALVE
4	BACKWASH OUTLET VALVE
5	RINSE OUTLET VALVE

FILTER FUNCTION	VALVES OPEN
SERVICE	AOV-1, AOV-2
BACKWASH	AOV-3, AOV-4
SETTLE	---
RINSE	AOV-1, AOV-5



1. CONNECTION TABLE

ITEM	DESCRIPTION	TYPE	SIZE
(A)	SERVICE INLET	150# RF FLG	4.00"
(B)	SERVICE OUTLET	150# RF FLG	4.00"
(C)	BACKWASH/RINSE OUTLET	150# RF FLG	4.00"
(D)	MEDIA REMOVAL PORT	150# RF FLG	4.00"
(E)	PRIMARY TANK DRAIN	150# RF FLG	2.00"
(F)	TANK VENT	FNPT	1.00"
(G)	SECONDARY TANK DRAIN	FNPT	0.75"
(H)	AIR INLET (80PSIG MIN. REQ.)	FNPT	0.25"
(J)	MANWAY W/EPDM GASKET	CRAB	14X18

NOTES:

- SHIPPING WEIGHT MM - 10,700 LB/[3398 Kg]; AC-7,475 LB/[3398 Kg].
  - OPERATING WEIGHT MM - 14,980 LB/[6809 Kg]; AC - 13,00 LB/[5909 Kg].
  - EQUIPMENT & PLUMBING TABLE:
- | FIND NO. | PART NUMBER   | QTY. | DESCRIPTION                             | U/M |
|----------|---------------|------|---|-----|
| 1        | 1220618       | 1    | PLMB,VENT,MM,316,1.00                   | EA  |
| 2        | 1227985       | 1    | PLMB,LWR PLMB,MM-60,PVC,4.00"           | EA  |
| 3        | 1228727       | 1    | PLMB,DRAIN,MM,316,0.75                  | EA  |
| 4        | 3049824       | 1    | PLMB,LWR DISTRIB,MM-60,PVC              | EA  |
| 5        | 3050334       | 1    | TANK,CS,100 PSI,60X72,FILTER/WS,4"PORTS | EA  |
| 6        | 501817B-EA-01 | 1    | FILTER-STAGER,4XFG,230/50,6PORT         | EA  |
| 7        | 501817B-PP-01 | 1    | PLMB-FACE,ASSY,MM/AC,PVC,CS,4.00,STAGER | EA  |
| 8        | 1140788       | 1    | FLANGE-BLND,PVC,4.00,150LB,GF           | EA  |
- ALL PIPING & EQUIPMENT SHOWN TO BE FULLY SUPPORTED BY GE W&PT PRODUCTION.
  - ALL INTERCONNECTING PIPING SHALL BE FULLY & INDEPENDENTLY SUPPORTED BY OTHERS.
  - ALL DIMENSIONS IN INCHES [MM].
  - REFERENCE - PIPING AND INSTRUMENTATION DIAGRAM: 502982-AP-01.
  - APPROXIMATE TIP HEIGHT 134.00 INCHES.
  - DRAWING TYPICAL FOR TRAIN 1,2,3&4 - ONLY ONE TRAIN SUPPLIED FOR THIS PROJECT, THE OTHERS ARE USED FROM INVENTORY.

REV	DESCRIPTION	ECO	DWN	APVD	DATE	CHKD	TOLERANCES UNLESS NOTED	DRAWN BY	DATE	CLIENT/JOB	TITLE	SIZE	DRAWING NO.	REV
A	INITIAL RELEASE	-	-	-	-	-	DECIMALS X ± XX ± 0.5 XXX ± DIMENSIONS IN INCHES DO NOT SCALE	DJS DLT SA	29NOV16 02DEC16 02DEC16	GE GPS - MSU - TANDIL ARGENTINA PROJECT NO.: 20526-1094237	GA,SYS-FLT,MMF,CS,60"X72" 100PSI,ASME	D	502982C-PG-01	A

TOLERANCES UNLESS NOTED ANGLES  
 DECIMALS  
 X ±  
 XX ± 0.5  
 FRAC  
 .XXX ±  
 DIMENSIONS IN INCHES  
 DO NOT SCALE  
 THIRD ANGLE

DRAWN BY: DJS  
 CHECKED BY: DLT  
 APPROVED BY: SA  
 DATE: 29NOV16, 02DEC16, 02DEC16

CLIENT/JOB: GE GPS - MSU - TANDIL ARGENTINA  
 PROJECT NO.: 20526-1094237  
 FILE: AUTOCAD

TITLE: GA,SYS-FLT,MMF,CS,60"X72" 100PSI,ASME  
 MATERIAL: SEE BOM

SIZE: D  
 DRAWING NO.: 502982C-PG-01  
 PROJECT: 502982  
 SCALE: 3:32  
 SHEET 1 OF 1

GE Water & Process Technologies  
 GLOBAL HEADQUARTERS : TREVOSE, PA USA +1-215-355-3300 WWW.GEWATER.COM  
 THIS DRAWING, THE DESIGN AND THE PATENTS IT COVERS, IS THE PROPERTY OF GENERAL ELECTRIC COMPANY AND ITS AFFILIATES AND THE INFORMATION CONTAINED HEREIN IS PROPRIETARY INFORMATION WHICH IS NOT TO BE DISCLOSED TO ANYONE WITHOUT PRIOR WRITTEN CONSENT OF SAID COMPANY. THIS DRAWING IS TO BE USED EXCLUSIVELY FOR THE PURPOSES EXPRESSLY AUTHORIZED BY GENERAL ELECTRIC COMPANY AND ITS AFFILIATES THROUGH ITS OFFICERS AND QUALIFIED REPRESENTATIVES AND FOR NO OTHER PURPOSE. NEITHER THIS DRAWING, NOR ANY PORTION THEREOF, SHALL BE REPRODUCED WITHOUT THE PRIOR WRITTEN CONSENT OF SAID COMPANY, AND ANY SUCH REPRODUCTION SHALL BEAR THIS NOTICE.