

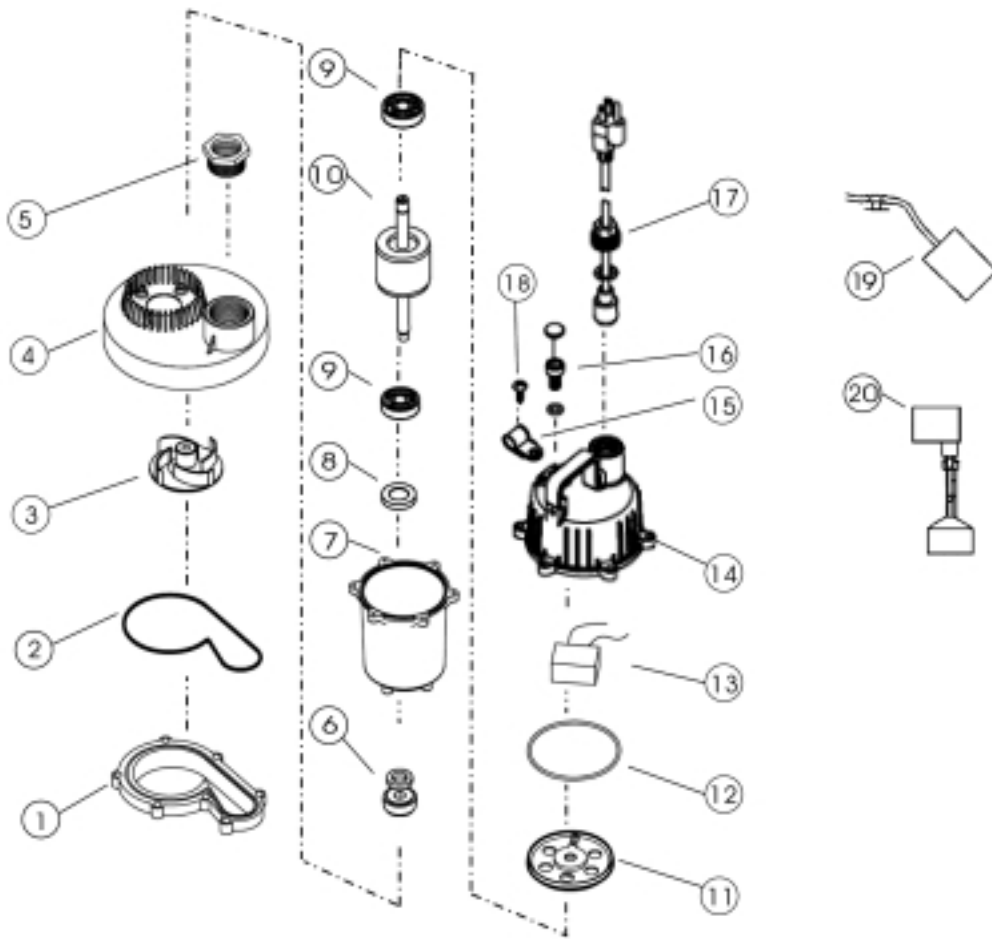
TITAN

Submersible Sump Pumps

Item #8091 Model DSB180 (tethered) & Item #8092 DSB180V (vertical)

Item #8093 Model DSB250 (tethered) & Item #8094 DSB250V (vertical)

Item #8095 Model DSB370 (tethered) & Item #8096 DSB370V (vertical)



| <u>Key #</u> | <u>Item #</u> | <u>Description</u> | <u>Qty</u> | <u>Key #</u> | <u>Item #</u> | <u>Description</u> | <u>Qty</u> |
|--------------|---------------|---|------------|--------------|---------------|--------------------------------|------------|
| 1 | 302718 | Pump Volute | 1 | 10 | — | Rotor | 1 |
| 2 | 302719 | O Ring | 1 | 11 | — | Bearing Housing | 1 |
| 3 | 302720 | Impeller (8091 & 8092-70.00 MM) | 1 | 12 | — | Pump Gasket | 1 |
| | 302721 | Impeller (8093 & 8094-74.0 MM) | | 13 | — | Capacitor | 1 |
| | 302722 | Impeller (8095 & 8097-78.0 MM) | | 14 | — | Upper Casing | 1 |
| 4 | 302723 | Pump Base | 1 | 15 | — | Cord Clamp | 1 |
| 5 | 302724 | Hose Adapter (1-1/2" MNPT x 1-1/4" FNPT) | 1 | 16 | — | Air Block | 1 |
| 6 | 302725 | Mechanical Seal | 1 | 17 | — | Barrel Connector & Plug | 1 |
| 7 | — | Motor Body & Stator | 1 | 18 | — | Screw | 6 |
| 8 | 302726 | Lip Seal | 1 | 19 | 302727 | Tether Float Switch | 1 |
| 9 | — | Bearing | 1 | 20 | 302750 | Vertical Float Switch | 1 |
| | | | | N/S | 302606 | Bracket, Vertical Float Switch | |

*N/S - Not Shown