

## Tools Needed for Installation:

- #2 Phillips Screw Driver • Wrench • Pencil
- Utility Knife • Measuring Tape

## 1. Inspect Kit Parts

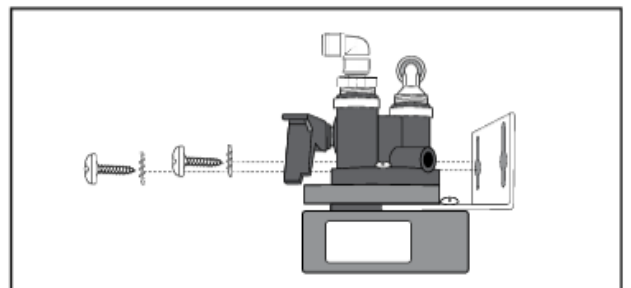
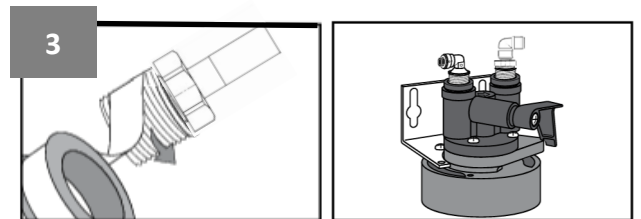
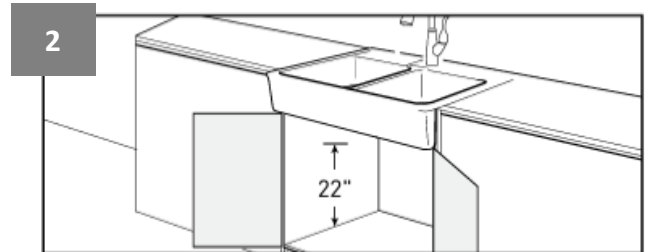
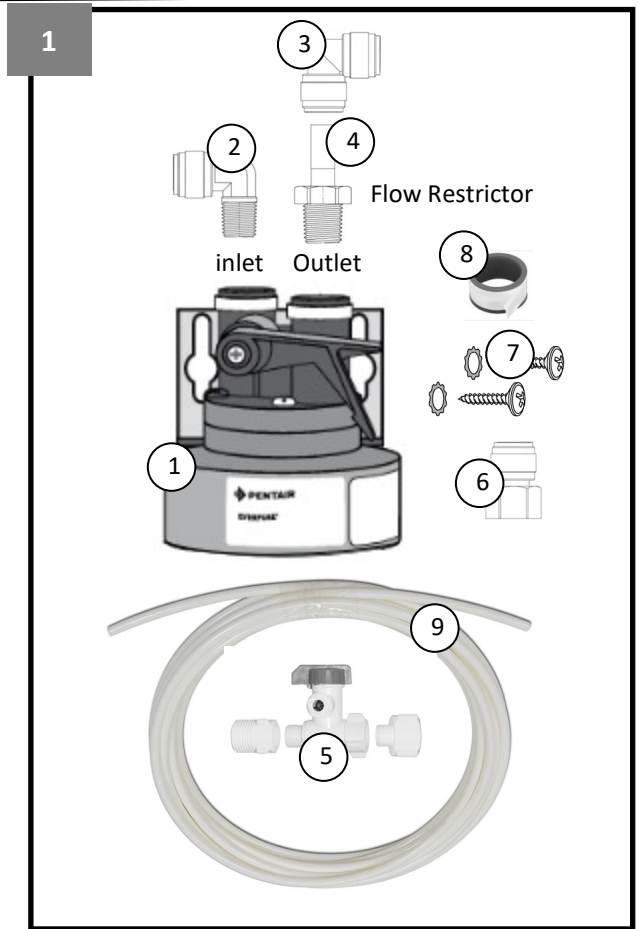
Key	Description
1	QL3 Everpure Filter Head
2	NeoFit Male Elbow 1/4 x 3/8 NPT
3	NeoFit Union Elbow 3/8 x 1/4
4	Stem Adapter with 1/2 gpm FC 3/8 x 3/8 NPT
5	Angle Stop Adapter 3/8 comp x 1/4 tube
6	NeoFit Female Faucet Adapter 1/4 tube x 7/16 UNS
7	Mounting Screws and star washers (2 each)
8	Teflon Plumbers Tape
9	10' LLDPE White 1/4" OD Tubing

## 2. Verify Under-sink Location

Measure 22" from the base of the cabinet, and mark the mounting location for the top of the filter head. Make sure there is adequate space above the head to open and close the built-in shut off valve and to avoid crimping the water line tubing. Also, make sure your chosen location offers easy access for future cartridge changes.

## 3. Mount Filter Head Under Sink

- Identify Filter Head and the inlet and outlet Fittings. The Outlet fitting is a swivel that uses a stem adapter and elbow. The stem adapter includes a small flow restrictor to ensure maximum flow at 0.5 gpm (1.9 Lpm) per minute.
- Apply Plumbers Tape to the threads of each male Fitting. Wrap tape in direction of the threads to assure a tight fit and avoid small leaks.
- Screw Inlet Elbow Fitting into the left side of the filter head, and hand tighten only.
- Screw Outlet Swivel Fitting (Stem Adapter first then apply the elbow) into the right side of the filter head in the same manner.
- Securely mount the filter head on the cabinet wall using the enclosed mounting screws and washers.



#### 4. Feed Supply Valve Installation

Note: This adaptor is designed to fit 3/8" compression supply threads and has adapters for 1/2" NPS connections. It connects to 1/4" OD tubing to feed the QL3 filter head inlet port.

- A. Locate the cold water supply valve (shut-off) under the sink. Turn off the cold water supply.
- B. Turn on the kitchen faucet. This will release pressure and allow water to completely drain from the line.
- C. Disconnect the cold water feed supply line from the top of the cold water supply valve. (Angle stop valve)
- D. Holding the Angle Stop Adapter in an upright position, thread the female side of the faucet adapter on to the cold water supply valve.
- E. Attach the cold water supply line for the faucet to the male - top side of the adapter.
- F. Occasionally, The adapter will have to be located at the base of the base of the cold water side of the sink faucet and the reason for the 1/2" NPS adapters.

#### 5. Attach Feed Water Line to Filter Head

- A. Measure length of tubing needed to connect Angle Stop Adaptor to Inlet Elbow Fitting on Filter Head. Allow adequate tubing to avoid sharp turns.
- B. Cut tubing at a 90° angle using a sharp knife.
- C. Insert ends of tubing into quick-connect fittings. Push tube into fitting and gently pull to confirm a tight fit.

#### 6. Attach Filtered Water to Dedicated Faucet\*

\*Faucet not included with this kit

- A. Install separate faucet for filtered drinking water. Follow individual manufacturer's instructions.
- B. Attach Faucet Connector Fitting (#6 in kit) to bottom end of threads on new faucet assembly. Plumbers Tape should not be required for this step.
- C. Measure length of tubing needed to connect the Outlet Swivel Fitting on Filter Head to the new Faucet Connector Fitting. Allow adequate tubing to avoid sharp turns. Cut and insert each end of the tubing into the fittings.

#### 7. Install and Flush Filter Cartridge\*

\*Filter Cartridge is not included with this kit

Once tube connections are made, open feed supply valve and check for leaks. Open faucet handle and flush the cartridge for 3-5 minutes minimum. Follow cartridge specific flushing instructions before using.

