



**T&S BRASS AND BRONZE WORKS, INC.**  
 2 Saddleback Cove / P.O. Box 1088  
 Travelers Rest, SC 29690

Model No.  
**B-5K**

Item No.

Travelers Rest, SC: 800-476-4103 • Simi Valley, CA: 800-423-0150 • Fax: 864-834-3518 • www.tsbrass.com

This Space for Architect/Engineer Approval

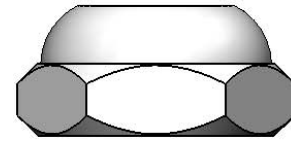
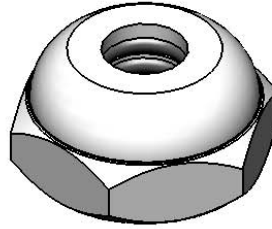
Job Name \_\_\_\_\_ Date \_\_\_\_\_

Model Specified \_\_\_\_\_ Quantity \_\_\_\_\_

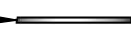
Customer/Wholesaler \_\_\_\_\_

Contractor \_\_\_\_\_

Architect/Engineer \_\_\_\_\_



009752-45  
 Bonnet  
 Washer

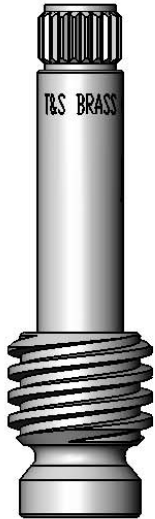


009750-25  
 Cerama &  
 Big-Flo  
 Bonnet

001075-45  
 O-Ring

010197-25  
 Big-Flo Bonnet w/  
 O-Rings & Washer  
 Qty = 12 ea.

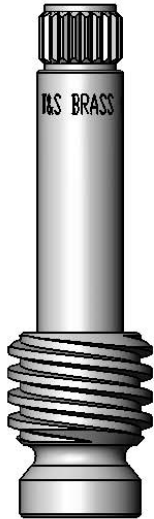
015294-40  
 Removable Spindle, RTC  
 Qty = 1 ea.



009649-45  
 Seat Washer

000933-45  
 Screw

015295-40  
 Removable Spindle, LTC  
 Qty = 1 ea.

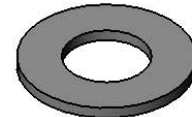


009649-45  
 Seat Washer

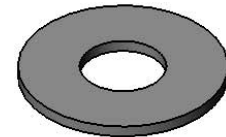
000933-45  
 Screw



000933-45  
 Screw  
 Qty = 4 ea.



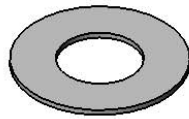
000976-45  
 Washer  
 Qty = 12 ea.



009635-45  
 Washer  
 Qty = 12 ea.



000761-20  
 Removable Seat  
 Qty = 6 ea.



002726-45  
 Washer  
 Qty = 12 ea.



009649-45  
 Washer  
 Qty = 22 ea.

Product Specifications:  
 B-0230 Series Faucet Repair Kit

Drawn  
**DHL**

Checked  
**DMH**

Approved  
**JHB**

Scale:  
 1:4

Date:  
 12/20/12