

# AquaCera

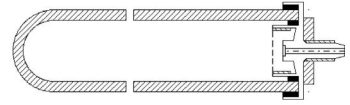
water filtration technology



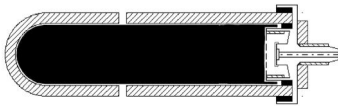
## Products

# Ceramics

AquaCera® water filter elements start with our silver impregnated ceramic micro-filter. Advances in the ceramic filtration manufacturing process result in a more effective and efficient means of treating a wide range of waterborne contaminants. Modern manufacturing practices give our ceramic elements a more controlled and consistent pore structure; the inclusion of silver gives the filter element bacteriostatic properties which prevents mitosis (grow through) and is self sterilizing. Our ceramic range is available with or without a carbon core, which allows greater flexibility in choosing the right filter based on your water filtration needs.



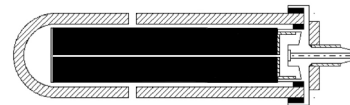
## Ceramic Plus



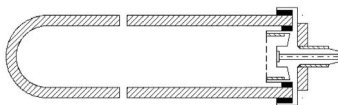
The Plus adds a granular activated, coconut shell based carbon to the core of the ceramic, the addition of which allows for treatment of chlorine, taste and odor. Ceramic elements for use in gravity filter systems are designated as **CeraGrav™ Plus**.

## CeraUltra™

The CeraUltra™ utilizes a carbon block core with lead, mercury, VOC and heavy metal reduction for pressurized filtration systems.



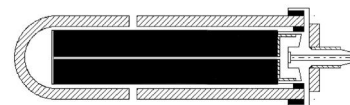
## CeraCarb™ Composite



CeraCarb™ ceramic composite water filter elements are the result of extensive research and development in ceramic filtration technology. These elements offer the highest filtration efficiencies available from a ceramic based filter element. The CeraCarb is a ceramic composite which includes a special mix of carbons which are infused throughout the filter, resulting in exceptional chemical removal capabilities, in addition to the removal of pathogenic bacteria and cysts.

## CeraMetix™

CeraMetix™ is the most advanced ceramic filter available. Utilizing AquaMetix™ core technology to offer all the benefits of our ceramic pre-filter shell plus the reduction of aluminum, arsenic, cadmium, chloramines, chlorine, cysts, fluoride, lead, mercury, nickel, radionuclides, silver, tri-halomethane, VOC's and zinc in a revolutionary block core. **CeraMetix™ GF** are for use in gravity filter systems and utilize AquaMetix™ in a granular form.

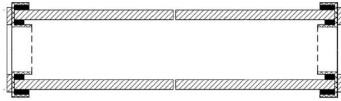
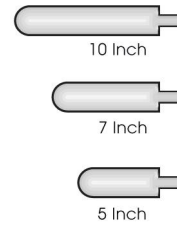


All AquaCera® ceramic filter elements are cleanable allowing the filter extended life which means less filters to replace. All of our ceramic elements remove >99.995% of pathogenic bacteria and cysts, providing you with safe, clean and healthy drinking water regardless of where you live. E. coli reduction to 99.99999%.



## Candles—Slimline

Slimline candles have a domed end and are available in the following grades: Ceramic, CeraGrav™ Plus, CeraUltra, CeraCarb™ and CeraMetix™. Candles are designed for use in gravity filter systems and some types of pressurized systems. Slimline filter candles are 2" diameter and are available in a variety of standard lengths. Standard lengths are 5", 7", 9" and 10".

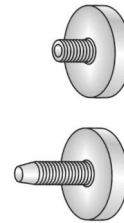


## Cartridges—Slimline

All Slimline cartridges measure 9 3/4" in length. Slimline cartridges have a 2" diameter and are available in Ceramic, Ceramic Plus and CeraCarb grades. All Slimline cartridges are designed to fit Industry Standard filter housings.

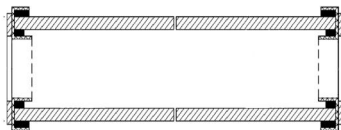
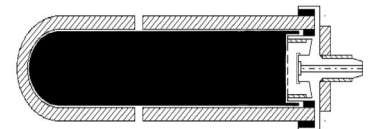
## Filter Mounts

Ceramic, CeraGrav™, Plus and CeraCarb™ Slimline filter candles are available in two standard thread mount types, 3/4" short (S) and a 1 1/4" long (L) mount. Not all filters are available in both mount types.



## Candles—Imperial

Imperial candles have a domed end and are available in the following grades: CeraGrav™ Plus, CeraCarb™ and CeraMetix™ GF. Imperial filter candles are 2 3/4" diameter and are available in a variety of standard lengths. Standard lengths are 5", 7", 9" and 10". All Imperial candles are supplied with the 1 1/4" long (L) threaded mount. Imperial candles are designed for use in gravity filter systems only.



## Cartridges—Imperial

All Imperial cartridges are 2 3/4" diameter and measure 9 3/4" in length. Imperial cartridges are available in Ceramic, Ceramic Plus, CeraUltra™, CeraCarb™ and CeraMetix™ grades. All Imperial cartridges are designed to fit Industry Standard filter housings. Imperial cartridges offer higher flow rates and increased capacity over Slimline cartridges.

# CounterTop Systems



The HCP is a freestanding filter system for countertop use, which is readily attached to an existing faucet via a diverter valve. Housing is molded from acetal and polyester materials. This system needs no permanent modifications to the plumbing. The system allows filtered or unfiltered water to be drawn from the existing faucet. This system is designed for cold water use only.

This system requires one 10" AquaCera® ceramic filter element with the short mount.

Available filters are the Ceramic, CeraUltra™, CeraCarb™ and CeraMetix™

The HCS is a freestanding filter system for countertop use, which is readily attached to an existing faucet via a diverter valve. Housing is manufactured from stainless steel. This system needs no permanent modifications to the plumbing. The system allows filtered or unfiltered water to be drawn from the existing faucet. This system is designed for cold water use only.

This system requires one 10" AquaCera® ceramic filter element with the short mount.

Available filters are the Ceramic, CeraUltra™, CeraCarb™ and CeraMetix™



# Under-Counter Systems



This is an in-line pressure filter housing molded from ABS and is supplied with the mounting bracket & screws. The inlet & outlet are 3/8" push-fit connectors for easy installation. Also available with a DIY installation kit which includes most parts needed for installation, including a faucet. This system is designed for cold water use only.

This system requires one 10" AquaCera® ceramic filter element with the short mount.

Available filters are the Ceramic, CeraUltra™, CeraCarb™ and CeraMetix™

This is an in-line pressure filter housing manufactured from stainless steel and is supplied with the mounting bracket & screws. The inlet & outlet are 3/8" push-fit connectors for easy installation. Also available with a DIY installation kit which includes most parts needed for installation, including a faucet. This system is designed for cold water use only.

This system requires one 10" AquaCera® ceramic filter element with the short mount.

Available filters are the Ceramic, CeraUltra™, CeraCarb™ and CeraMetix™



# Under-Counter Systems



The EcoFast™ is an eco-friendly, compact in-line filter system. The housing allows for easy removal of the filter element for maintenance by utilizing a built-in automatic water shut off valve. This system uses specially designed filters that will only fit in this system. Also available with a DIY installation kit which includes most parts needed for installation, including a faucet. This system is designed for cold water use only.

Available filters are the Fiberdyne MultiMedia, CeraCarb™ and AquaMetix™.

The EcoFast™ Twin allows for 2 filters to be used together to make a more comprehensive filter system. Also available with a DIY installation kit which includes most parts needed for installation, including a faucet.

Choose any 2 of these available filters Fiberdyne MultiMedia, CeraCarb™ and AquaMetix™.



The IIQC is an in-line system which uses its own specially designed Imperial cartridge utilizing a CeraCarb™ ceramic shell with our AquaMetix™ media inside. This system uses specially designed filters that will only fit in this system. Also available with a DIY installation kit which includes most parts needed for installation, including a faucet.

The IIQC system utilizes a quick change mount that makes for easy and fast filter replacement. The ceramic filter inside this unit cannot be cleaned as it is encapsulated inside the housing. This system is designed for cold water use only.

The CeraGuard™ is a triple housing system. This system utilizes hollow fiber technology for the removal of bacteria, virus, colloids and silt. The system also incorporates additional media filters for the removal of chlorine, taste and odor, heavy metals and fluoride. This system does not waste any water. Also available with a DIY installation kit which includes most parts needed for installation, including a faucet. The CeraGuard™ uses specially designed filters that will only fit in this system. This system is designed for cold water use only.





# Gravity Systems

Gravity filter systems were first designed to be used in an emergency situation where a reliable water source was not available. Today, while still used for emergency and preparedness, gravity filter systems are used for everyday water filtration, either in your home or anywhere you may travel, offering safe, clean filtered water for individuals, families and communities around the world.



The Mini Traveler is a one liter, personal filter system that accommodates one 5" ceramic filter. Manufactured from high grade stainless steel, it is highly portable and lightweight. The Mini comes complete with a nylon carrying bag to keep the system neat & tidy while traveling. This system is designed for cold water use only.

Available filters are the CeraGrav™ Plus, CeraCarb™ and CeraMetix™-GF.

The SS is manufactured from polished stainless steel and can accommodate up to 4 ceramic filter candles. The SS is very easy to assemble, requiring no tools to set up. The upper chamber neatly nests into the lower chamber making for easy transport of the SS unit. This system is designed for cold water use only.

Available filters are the CeraGrav™ Plus, CeraCarb™ and CeraMetix™-GF.



The LP5 is manufactured from FDA approved, high density polyethylene which makes the unit very durable and extremely lightweight. The LP5 will accommodate up to 5 Slimline or Imperial filter candles, allowing this system to provide safe, clean water for large families or emergency relief. This system is designed for cold water use only.

Available filters are the CeraGrav™ Plus, CeraCarb™ and CeraMetix™-GF.

# Compatibility Charts

## Pressure Housings

Housing/Filter Grade	Ceramic	Ceramic Plus	CeraUltra™	CeraCarb™	CeraMetix™
HCP	✓	✗	✓	✓	✓
HCS	✓	✗	✓	✓	✓
Inline (IP)	✓	✗	✓	✓	✓
HIS	✓	✗	✓	✓	✓

Pressure housings above all utilize a Slimline 10" Short mount ceramic filter candle.

Housings/Systems not shown in this chart utilize filters not compatible with these systems, refer to previous pages for specific filters for those systems.

The Ceramic Plus is not recommended for pressured housings due to the possibility of channeling of granular media inside the filter.

## Gravity Housings

Housing/Filter Grade	Ceramic	CeraGrav™ Plus	CeraUltra™	CeraCarb™	CeraMetix™ GF
Mini Traveler <sup>1</sup>	✓	✓	✗	✓	✓
LP5 <sup>2</sup>	✓	✓	✗	✓	✓
SS <sup>3</sup>	✓	✓	✗	✓	✓

<sup>1</sup> The Mini Traveler unit utilizes a single Slimline 5" filter candle.

<sup>2</sup> The LP5 housing can accommodate up to 5 Slimline or Imperial size filters in 5", 7", 9" and 10" lengths, where available.

<sup>3</sup> The SS unit can accommodate up to 4 Slimline or Imperial size filters in 5", 7" and 9" lengths, where available.



[www.aquacera.com](http://www.aquacera.com)