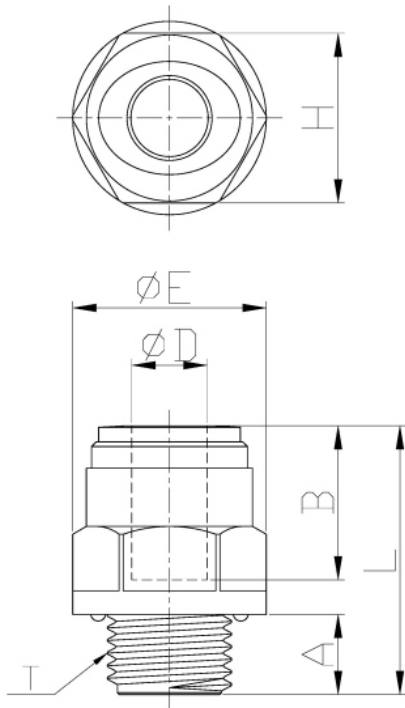


Male Connector (BSPP)

Pressure Ratings			
	< 5/16"	3/8"	1/2"
33 °F	290 psi	232 psi	203 psi
68 °F	290 psi	232 psi	203 psi
150 °F	232 psi	203 psi	116 psi

Torque Allowance					
Thread Size	1/8"	1/4"	3/8"	1/2"	3/4"
Max Torque	1.1 ft lbs	1.1 ft lbs	2.2 ft lbs	2.2 ft lbs	2.9 ft lbs



Model	ØD	T(BSPP)	A	B	ØE	H(Hex)	L	WEIGHT(g)
AMC3-G1	3/16	1/8	0.236	0.591	0.650	0.591	0.949	3.3
AMC4-G1	1/4	1/8	0.236	0.665	0.650	0.591	0.949	3.6
AMC4-G2	1/4	1/4	0.335	0.665	0.807	0.709	0.949	4.7
AMC5-G1	5/16	1/8	0.236	0.689	0.728	0.669	1.063	5.2
AMC5-G2	5/16	1/4	0.335	0.689	0.807	0.709	1.122	6.1
AMC5-G3	5/16	3/8	0.354	0.689	0.945	0.827	1.043	7
AMC6-G1	3/8	1/8	0.236	0.795	0.827	0.748	1.217	7.6
AMC6-G2	3/8	1/4	0.335	0.795	0.831	0.748	1.217	7.3
AMC6-G3	3/8	3/8	0.335	0.795	0.953	0.827	1.039	7.1
AMC6-G4	3/8	1/2	0.492	0.795	1.118	1.024	1.177	11.7
AMC8-G3	1/2	3/8	0.354	0.941	1.063	0.945	1.354	11.7
AMC8-G4	1/2	1/2	0.492	0.980	1.118	1.024	1.295	12.3